



Working Instruction, Mechanical

Applicable for W880i, W888c

CONTENTS

- 1 Introduction 3**
 - 1.1 Tools and Equipment..... 4**
 - 1.2 General Cautions..... 5**
 - 1.3 Adhesives 5**
 - 1.4 Using Hand and ESD Protection..... 5**
 - 1.5 Protection of Displays, Lenses, and Windows..... 5**
 - 1.6 Acceptable Pry Tools..... 5**
- 2 Disassembly 6**
 - 2.1 Overview 6**
 - 2.1.1 Battery Cover Removal 6
 - 2.1.2 Battery Removal..... 7
 - 2.1.3 Front Cover Removal 8
 - 2.1.4 Dome Foil Assembly Removal 11
 - 2.1.5 Circuit Board Removal 12
 - 2.1.6 Camera Flex Assembly Removal 15
- 3 Part Replacement..... 17**
 - 3.1 Battery Cover..... 17**
 - 3.2 Phone Label..... 17**
 - 3.2.1 Label Removal 17
 - 3.2.2 Label Installation 18
 - 3.2.3 Sheet(Battery) Installation 19
 - 3.3 Keypad 20**
 - 3.4 Front Cover 21**
 - 3.5 Dome Foil Assembly..... 22**
 - 3.6 LCD Assembly 22**
 - 3.7 Heat Spreader 27**
 - 3.8 Antenna 27**
 - 3.9 Camera Flex Assembly 28**
 - 3.10 SIM Flex Module 28**
 - 3.11 Rear Camera Window 33**
 - 3.12 Walkman Key 34**
 - 3.13 Volume Key..... 35**
 - 3.14 Camera Key..... 36**
 - 3.15 Memory Stick Cover..... 37**
 - 3.16 Co-Brand Label..... 39**
 - 3.17 Back Cover..... 40**



| | |
|---|-----------|
| 3.18 RF Port Plug | 49 |
| 3.19 Liquid Intrusion Indicator | 51 |
| 3.20 Board Swap – replace swap board | 52 |
| 3.21 Board Swap – Change Label | 53 |
| 3.22 Board Swap – Customize Software | 53 |
| 4 Reassembly | 55 |
| 4.1 Overview | 55 |
| 4.1.1 Camera Flex Assembly Installation..... | 55 |
| 4.1.2 Circuit Board Installation..... | 57 |
| 4.1.3 Dome foil Assembly Installation..... | 60 |
| 4.1.4 Front Cover Installation..... | 61 |
| 4.1.5 Battery Installation..... | 63 |
| 4.1.6 Battery Cover Installation..... | 64 |
| 5 Revision History | 65 |

1 Introduction

W880



1.1 Tools and Equipment

The following tools and equipment should be available while performing the procedures.

STANDARD TOOLS

- Style 2A Tweezers – Rounded Tip
- Nylon Pointer
- Torque Driver
- Dental Hook
- Plectrum



PRODUCT SPECIFIC TOOLS

- Torx size 6 Bit (T6 bit)



ESD EQUIPMENT

Protect the phone from ESD damages whenever it has been opened by using:

- ESD-wristband
- ESD-gloves



LABEL EQUIPMENT

The following special equipment is required when replacing or installing a new label:

- Hot air flow solder station
- Zebra printer connected to computer





1.2 General Cautions

The following cautions are considered to be generic for all products and will not be repeated in the Disassembly, Reassembly, and Replacements sections:

- **SWITCH OFF THE PHONE AND REMOVE ANY MEMORY STICK BEFORE THE START OF THE DISASSEMBLY!**
- **KEEP ALL CONTACT SURFACES CLEAN!**
- **BE CAREFUL WHEN USING TOOLS LIKE THE DENTIST HOOK, TWEEZERS, PRY TOOLS, ETC. TO AVOID SCRATCHES OR DAMAGES TO THE EXTERIOR AND INTERIOR PARTS OF THE PHONE!**
- **BE CAREFUL NOT TO DAMAGE ANY CONTACT SPRINGS!**
- **REMEMBER TO REMOVE THE PROTECTION FOILS ON NEW PARTS SUCH AS THE FRONT COVER AND LCD!**
- **NEVER TOUCH THE DISPLAY GLASS!**

1.3 Adhesives

Use a dentist hook, the tweezers, and/or a nylon pointer to remove old adhesives. Clean the surface with isopropyl alcohol before attaching new adhesives.

1.4 Using Hand and ESD Protection

When handling this product, keep all surfaces clean of dirt, dust, debris, and hand oil. Use appropriate ESD precautions when working on this product. The use of finger cots or gloves, an ESD mat, and an ESD wrist strap are required at minimum.

1.5 Protection of Displays, Lenses, and Windows

Any time the screen portion of a display assembly, the windows of a display cover, or a camera lens is unprotected and exposed, add a protective film over the exposed part to reduce the amount of dust, finger prints, debris, and/or damage that the part may obtain.

1.6 Acceptable Pry Tools

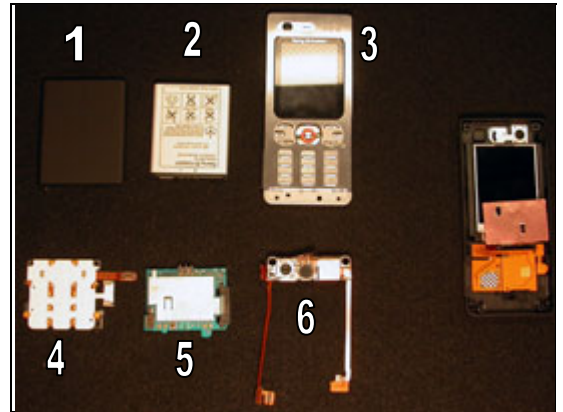
Whenever the phrase “pry tool” is used, a nylon pointer or a front opening tool may be used depending on the user’s preference.

2 Disassembly

2.1 Overview

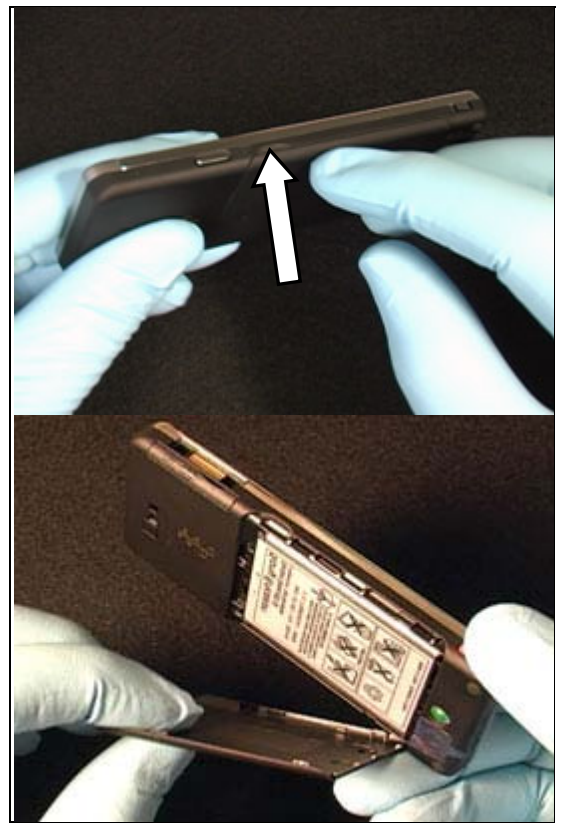
The disassembly is done in the following sequence:

1. Remove Battery Cover
2. Remove Battery
3. Remove Front Cover
4. Remove Dome foil Assembly
5. Remove Circuit Board
6. Remove Camera Flex Assembly



2.1.1 Battery Cover Removal

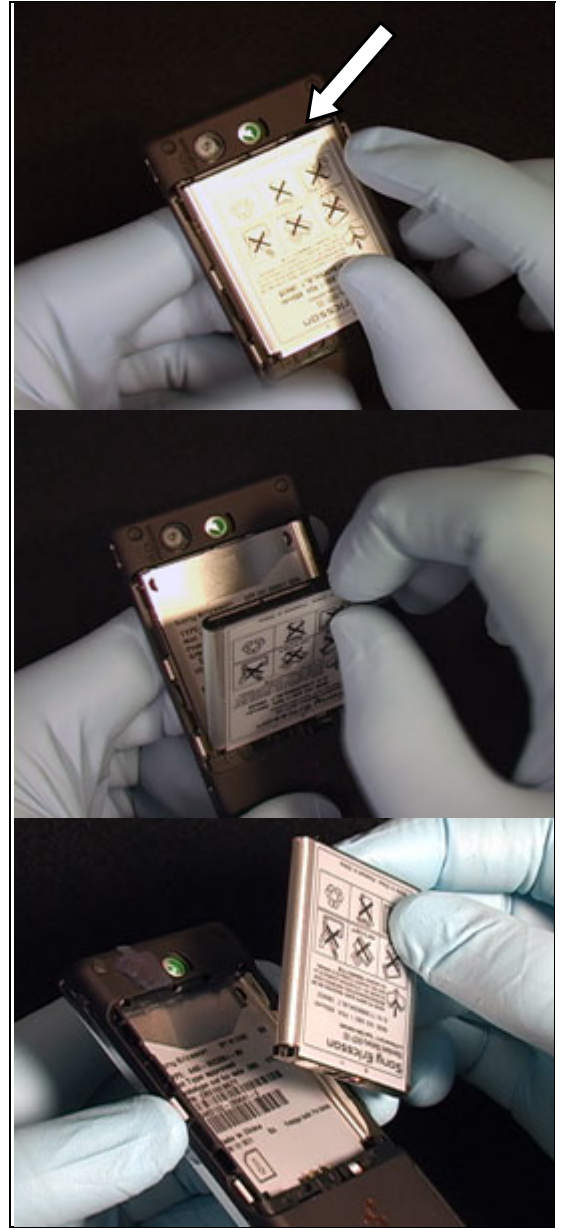
Locate the battery cover removal notch indicated and use your finger nail or a pry tool to pull off the battery cover.



2.1.2 Battery Removal

Locate the battery removal notch and use your finger nail or pry tool to lift the end of the battery.

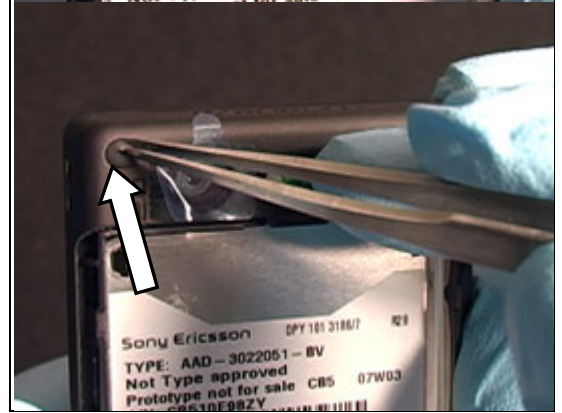
Once the end of the battery is lifted, pull the battery out of the phone.



2.1.3 Front Cover Removal

Using style 2A tweezers, remove the screw plugs.

Be careful to not damage the back cover of the phone.



Use a torque driver and a T6 bit, remove the two rear screws.



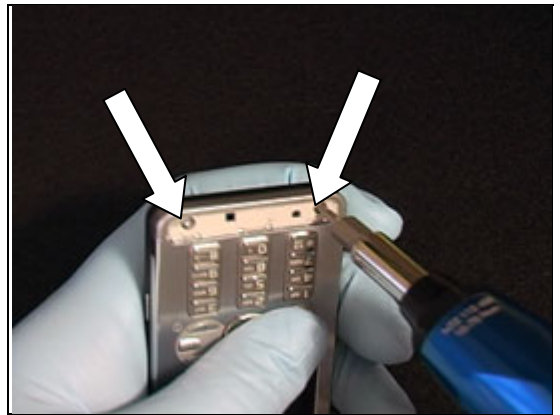
Slide one side of a pair of Style 2A tweezers under the co-brand label in the location shown and peel the co-brand plate off of the front cover.

Be careful to not damage the front cover.





Using a torque driver and a T6 bit, remove the two front screws.

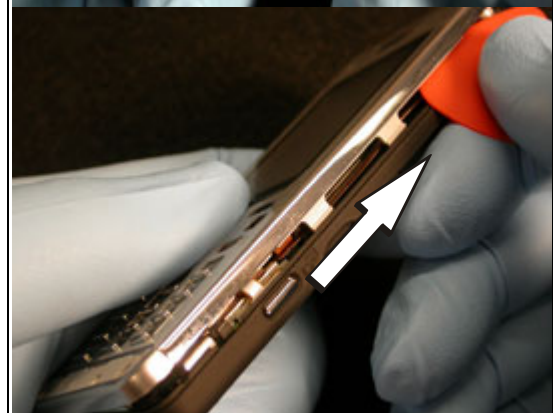


Insert the tip of a plectrum in the seam between the front and back covers in the location shown.

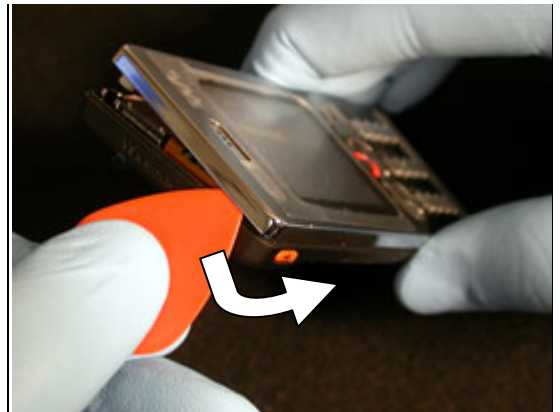
The plectrum should be angled so that the tip of it is under the edge of the front cover.



Slide the plectrum down the seam of the phone until the latches along that side are released.



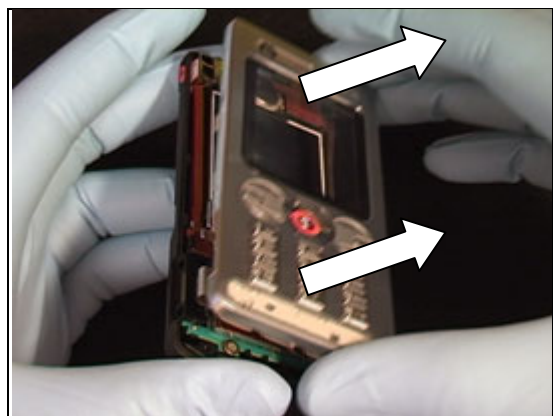
While holding the separated seam apart, insert the tip of the plectrum in the location shown.



Slide the plectrum along the seam until the latches along the system connector side of the phone are released.

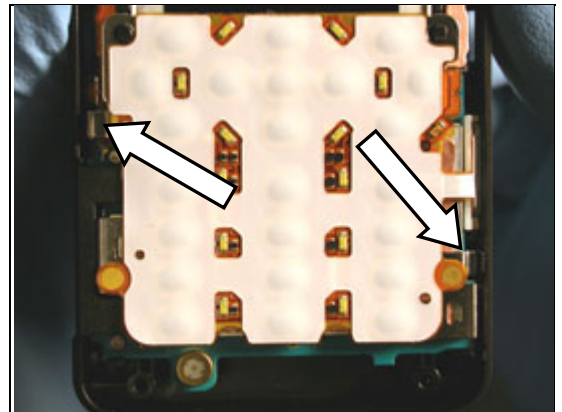


Lift the front cover off of the phone.

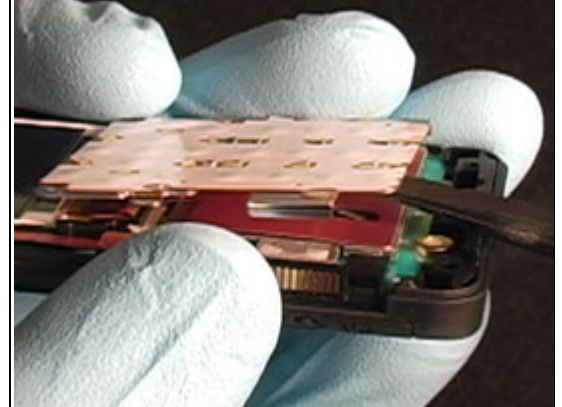
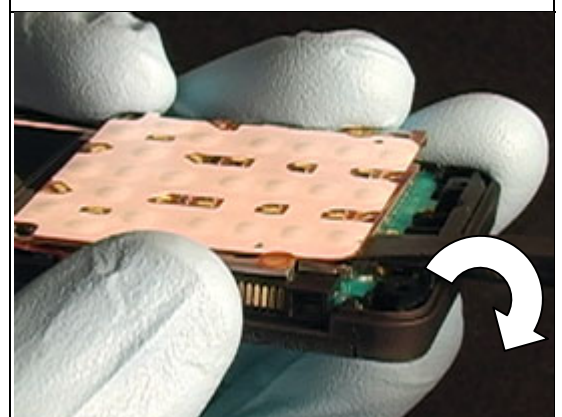


2.1.4 Dome Foil Assembly Removal

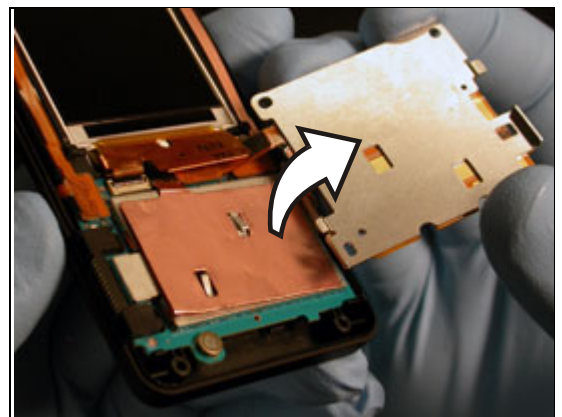
Use the tip of the plectrum to release the two latches indicated from the dome foil assembly support plate.



Using a pry tool, pry in the location shown to detach the adhesive holding the dome foil assembly to the circuit board.

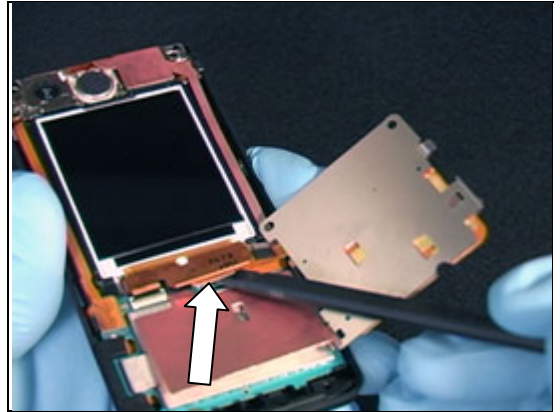


Rotate the dome foil assembly away from the system connector.

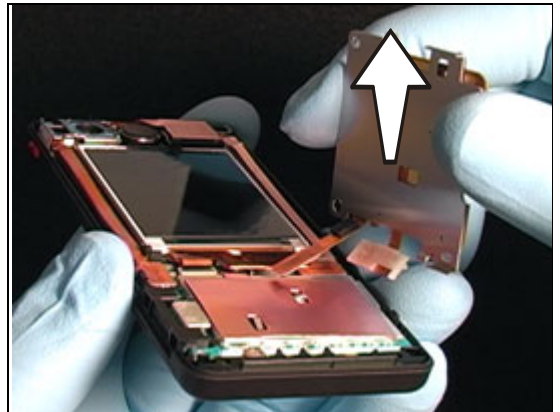




Use the flat end of a nylon pointer to disconnect the dome foil assembly's flex film connector from the circuit board.

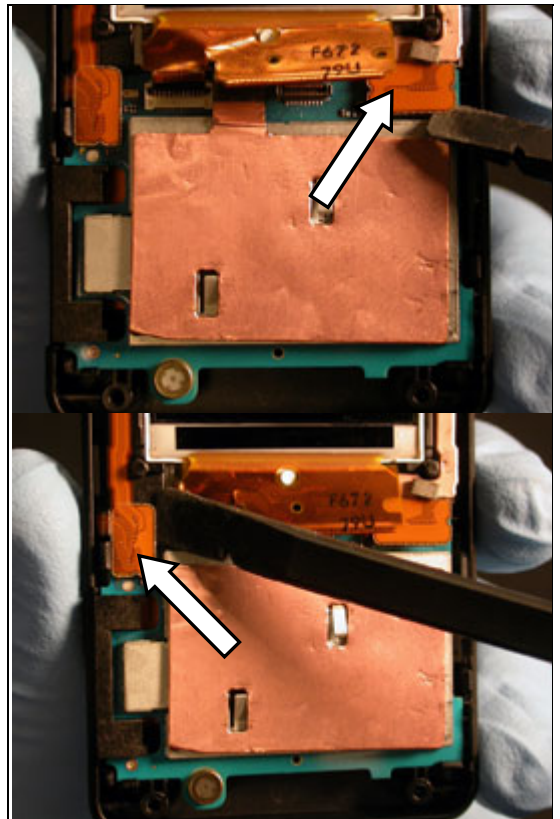


Pull the dome foil assembly straight up out of the phone. Make sure the camera switch portion of the dome foil assembly does not get damaged during this movement.



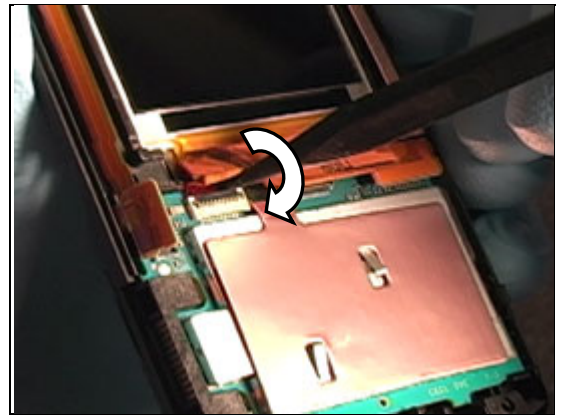
2.1.5 Circuit Board Removal

Use the flat end of a nylon pointer to disconnect both of the camera flex assembly connectors from the circuit board.

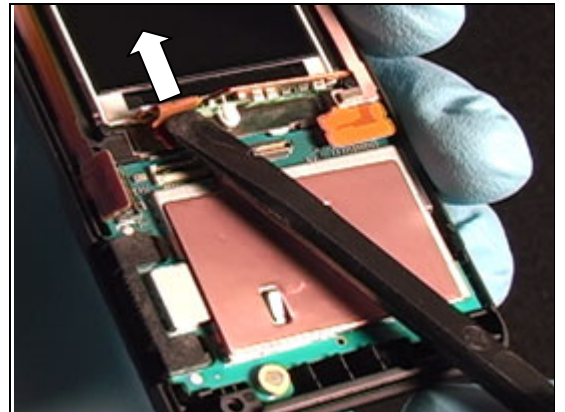




Using a nylon pointer, rotate the black bar portion of the ZIF connector toward the circuit board.

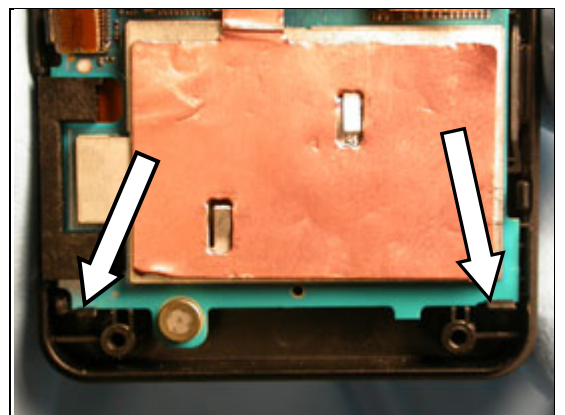


Use the flat end of a nylon pointer to push the LCD flex film out of its connector toward the LCD.

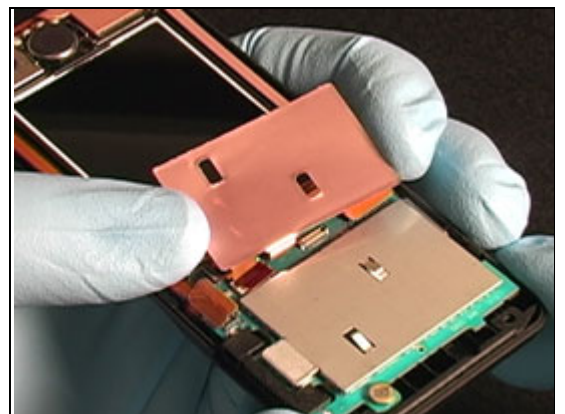


Use a nylon pointer to release the two latches indicated from the bottom edge of the circuit board.

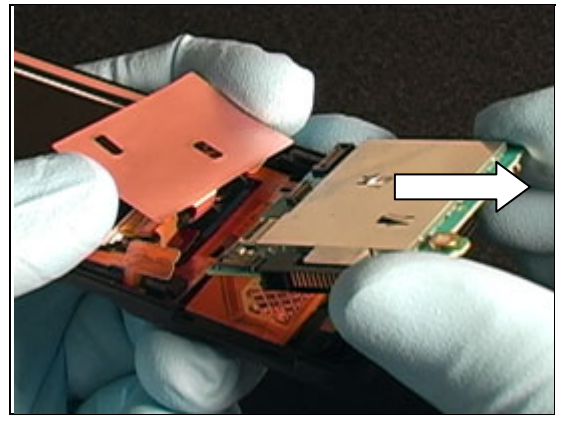
Be careful not to damage the latches when releasing the circuit board. These latches easily break.



Lift the copper portion of the heat spreader up and fold it toward the LCD.

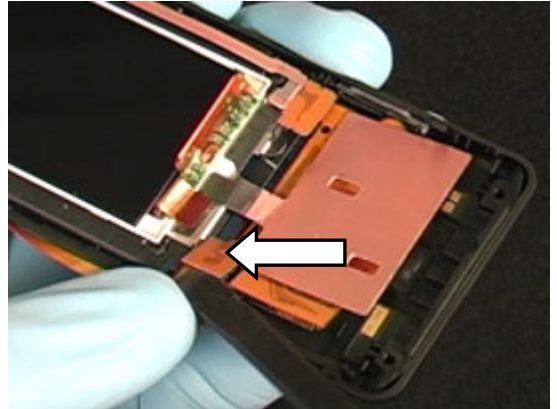


Grip the end of the circuit board that you just released, lift the circuit board from its cavity in the phone.

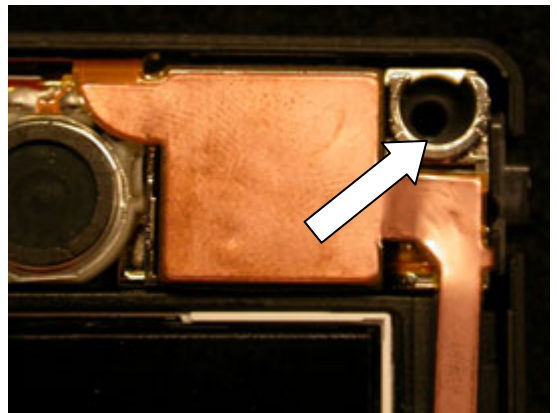


2.1.6 Camera Flex Assembly Removal

Using the flat end of a nylon pointer, disconnect the camera flex assembly from the SIM flex.



Insert the tip of a pair of tweezers in the hole in the camera flex assembly indicated.

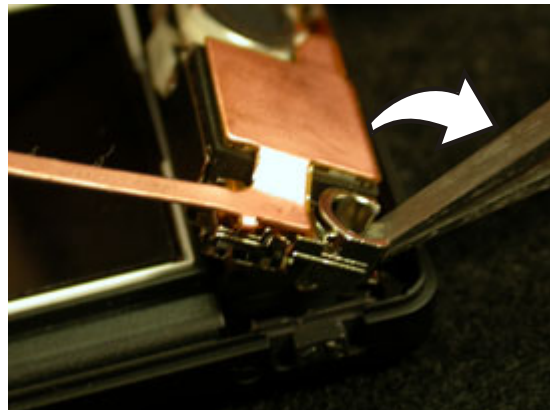


Do not insert the tip of the tweezers through the smaller hole at the bottom of the hole in the camera flex assembly. This can cause damage to the back cover.

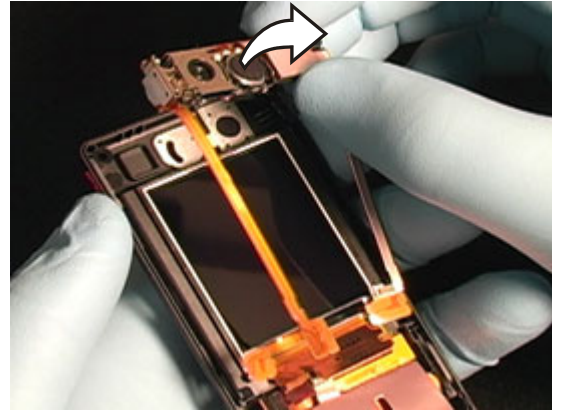


Rotate the tweezers away from the LCD. The camera flex assembly will lift from its cavity in the back cover.

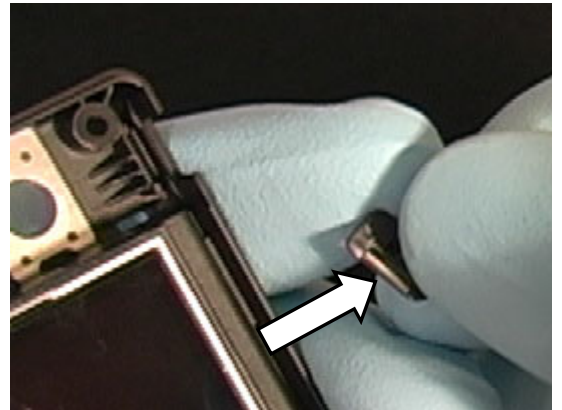
THE VOLUME KEY MAY FALL OUT.



Remove the flex film assembly from atop the back cover and set it aside.



If the volume key fell out, make sure its spring is still attached. Then place it back into its slot in the back cover with the spring facing downward into the back cover.



3 Part Replacement

3.1 Battery Cover

Perform the disassembly procedure from section 2.1.1

Obtain a new battery cover.

Perform the reassembly procedure from section 4.1.6

3.2 Phone Label

3.2.1 Label Removal

Perform sections 2.1.1-2.1.2 of the disassembly procedure.

1. Before removing the label, print a new label.

THE TEXT ON THE NEW LABEL MUST BE FULLY READABLE AND ALL BARCODES MUST BE SCANNABLE.

LABELS ONLY HAVE TO BE REMOVED FROM THE PHONE IF THERE ARE ALREADY TWO OR MORE LABELS ON THE PHONE. HEATING UP THE OLD LABEL(S) WITH A HOT AIR DEVICE MAY MAKE REMOVING THEM EASIER.

2. Carefully peel the old label from the bottom of the battery cavity.

MAKE SURE THAT ALL ADHESIVE RESIDUE IS REMOVED. CAREFULLY CLEAN OFF ANY REMAINING RESIDUE WITH ALCOHOL AND A LINT-FREE CLOTH.



3.2.3 Sheet(Battery) Installation

Position the Sheet in the middle of the battery cavity.

MAKE SURE THAT THE SHEET IS POSITIONED IN THE MIDDLE OF THE BATTERY CAVITY.



3.3 Keypad

Perform sections 2.1.1-2.1.3 of the disassembly procedure.

Remove the keypad from the front cover.



Obtain a new keypad.



Place the new keypad in the front cover.



Press the keypad down around each of its four placement pins.

Starting at section 4.1.4, perform the remainder of the reassembly procedure.





3.4 Front Cover

Perform sections 2.1.1-2.1.3 of the disassembly procedure.

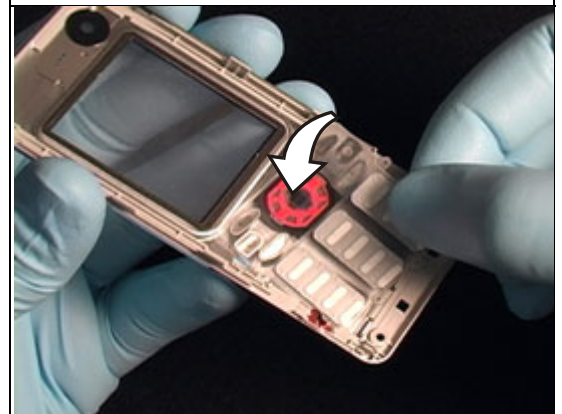
Remove the keypad from the old front cover.



Obtain a new front cover.



Place the keypad in the new front cover.



Press the keypad down around each of its four placement pins.

Starting at section 4.1.4, perform the remainder of the reassembly procedure.





3.5 Dome Foil Assembly

Perform the disassembly procedure from section 2.1.1 - 2.1.4

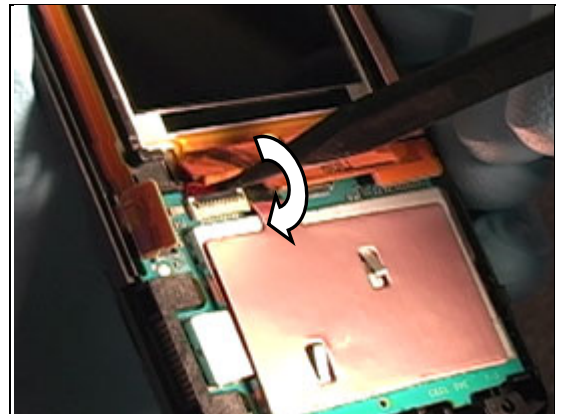
Obtain a new dome foil assembly.

Perform the reassembly procedure from section 4.1.3 - 4.1.6

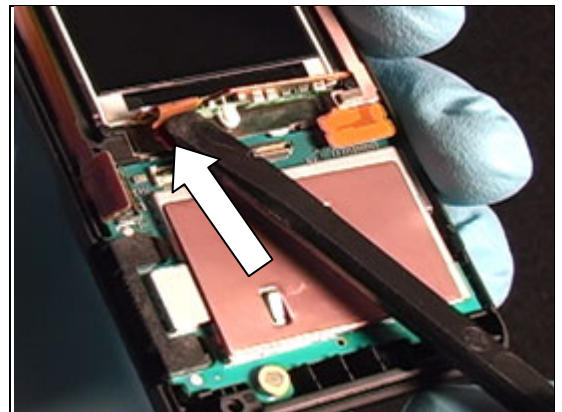
3.6 LCD Assembly

Perform sections 2.1.1-2.1.4 of the disassembly procedure.

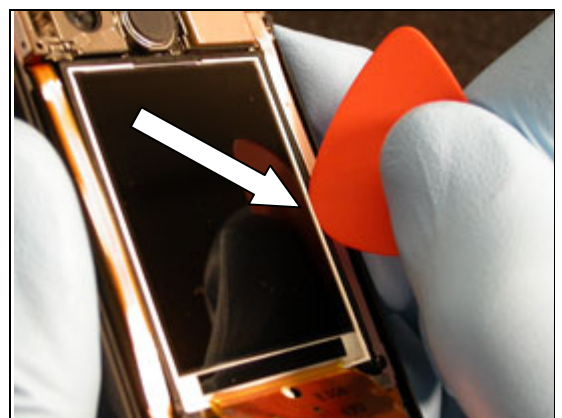
Using a nylon pointer, rotate the black bar portion of the ZIF connector toward the circuit board.



Use the nylon pointer to push the LCD flex film out of its connector toward the LCD.



Insert one of the corners of the plectrum into the seam along one side of the LCD in the location shown.

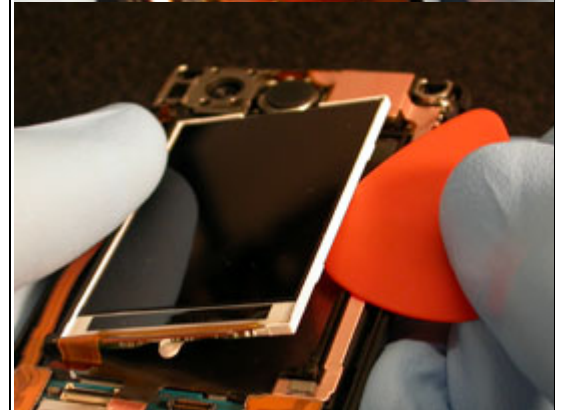




While pressing the plectrum into the seam, rotate it away from the LCD.

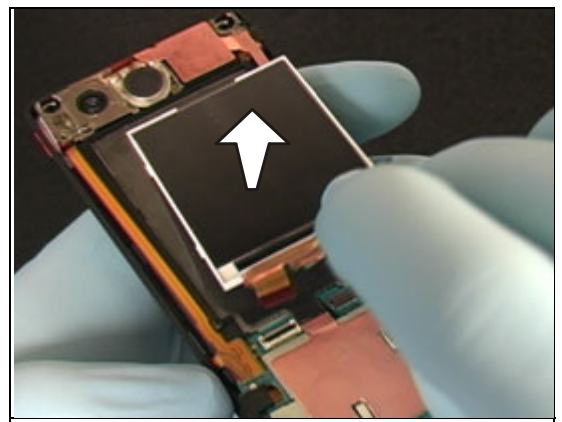


The LCD should pop free of its cavity in the back cover.



Lift the LCD out of the phone.

IF THE HEAT SPREADER IS DAMAGED DURING THE REMOVAL OF THE LCD, REPLACE THE HEAT SPREADER WITH A NEW ONE.

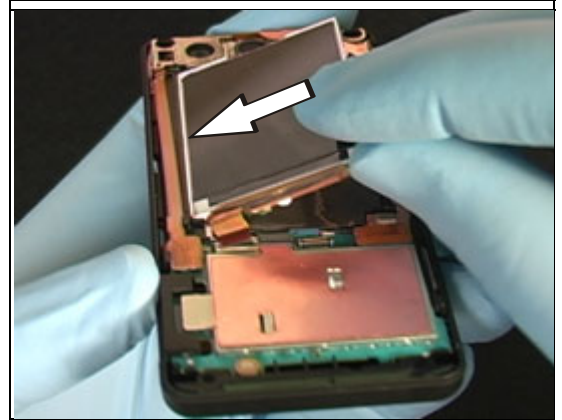
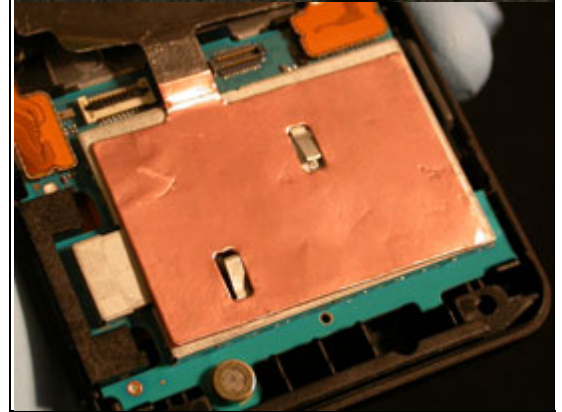




Make sure the heat spreader is positioned as shown so that the two holes in the heat spreader line up with the two shield can lid contacts.

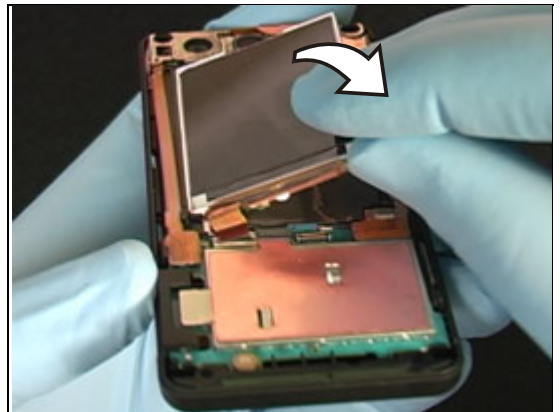
IF THE HEAT SPREADER WAS DAMAGED DURING THE REMOVAL OF THE LCD, REPLACE THE HEAT SPREADER WITH A NEW ONE.

Obtain a new LCD and insert one side of the LCD into its cavity in the back cover as shown

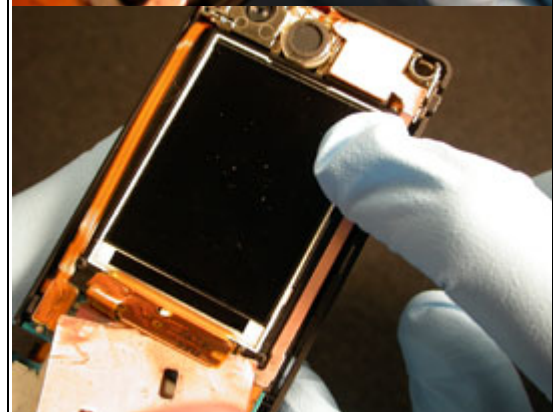
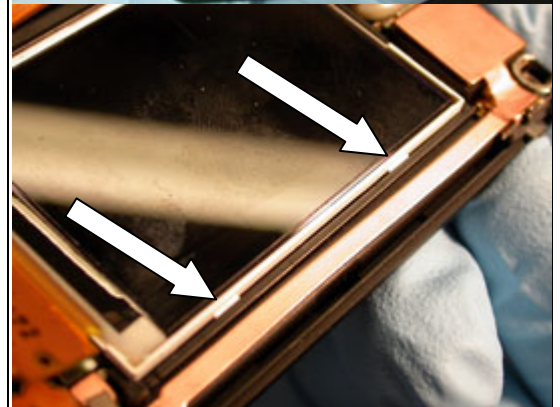




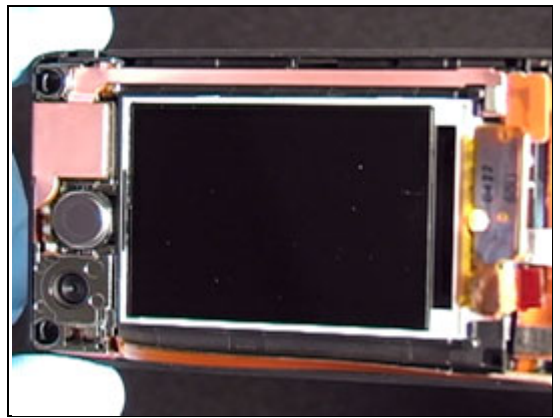
Rotate the LCD down into its cavity.



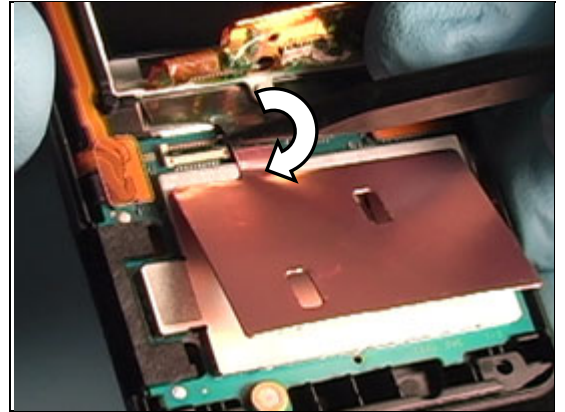
Press the raised edge of the LCD indicated into its cavity in the back cover so that the two latches on that side of the LCD snap into their openings.



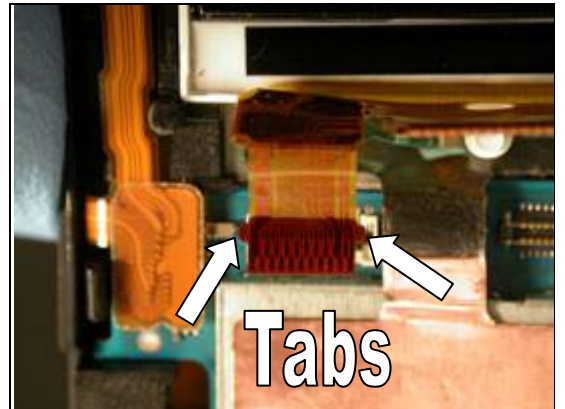
Make sure the LCD is fully seated and that there are no gaps along either side.



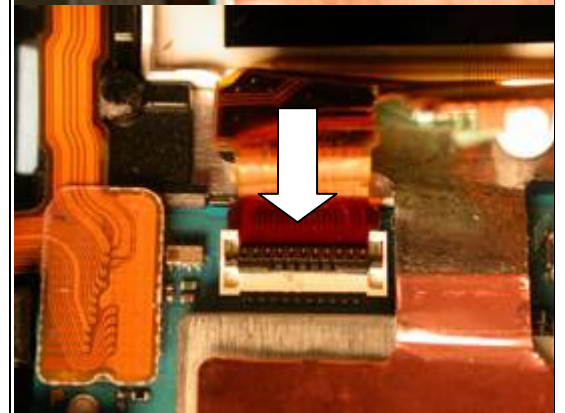
Using a nylon pointer, verify the black retaining bar on the LCD to board ZIF connector is rotated up as shown.



The LCD's flex connection is completely seated in the ZIF connector when the two tabs on the flex are against the ZIF connector.

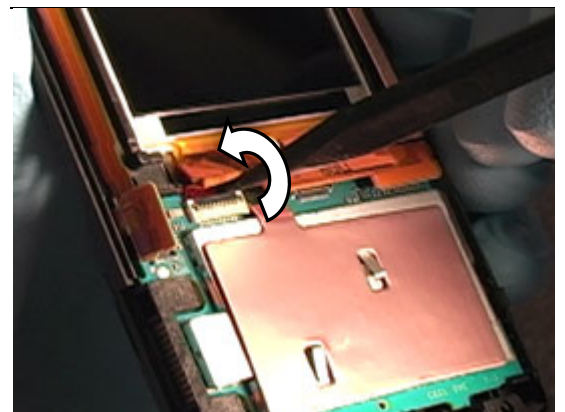


Using style 2A tweezers, insert the LCD flex film into its corresponding ZIF connector on the circuit board.



Using a nylon pointer, rotate the black retaining bar on the ZIF connector down over the LCD flex as shown.

Starting at section 4.1.3, perform the remainder of the reassembly procedure.



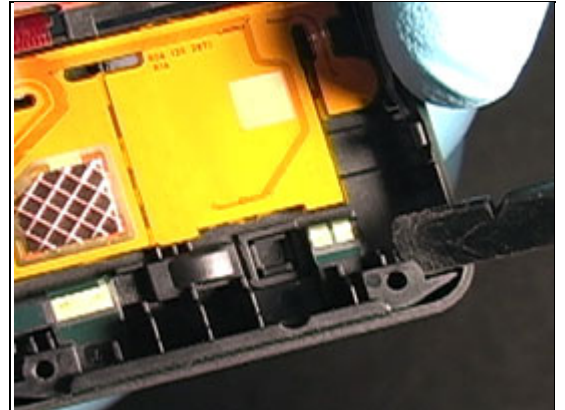
3.7 Heat Spreader

Perform the LCD replacement procedure, but replace the heat spreader instead of the LCD.

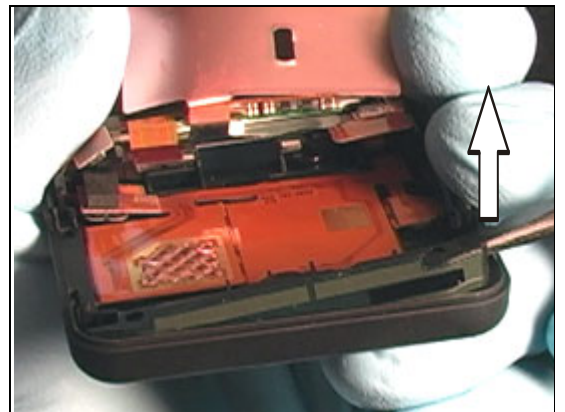
3.8 Antenna

Perform sections 2.1.1-2.1.5 of the disassembly procedure.

Slide the flat portion of a pry tool between the antenna and the back cover near the screw hole indicated.



Lift the end of the antenna the pry tool is under.



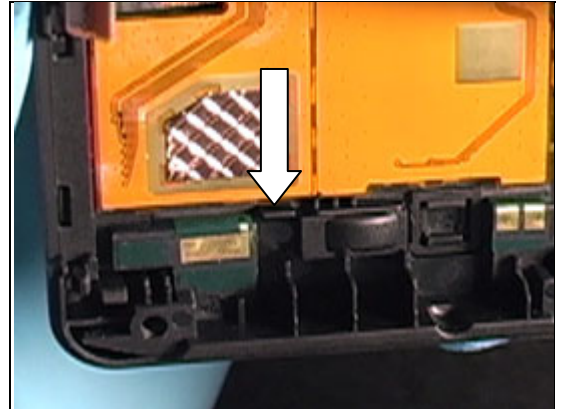
Remove the antenna from the back cover.



Obtain a new antenna and insert it into its cavity in the back cover.

MAKE SURE THAT ANTENNA IS SEATED UNDER THE LATCH INDICATED.

Starting at section 4.1.2, perform the remainder of the reassembly procedure.



3.9 Camera Flex Assembly

Perform the disassembly procedure from section 2.1.1 - 2.1.6

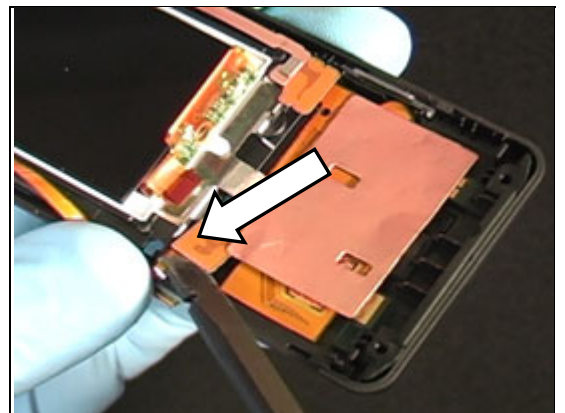
Obtain a new camera flex assembly.

Perform the reassembly procedure from section 4.1.1 - 4.1.6

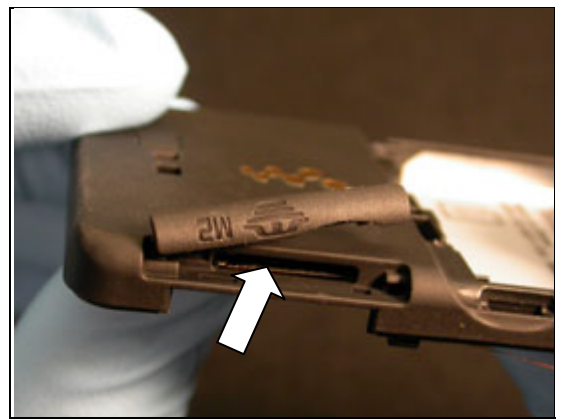
3.10 SIM Flex Module

Perform sections 2.1.1-2.1.5 of the disassembly procedure.

Using the flat end of a nylon pointer, disconnect the camera flex assembly from the SIM flex.



Verify there is not a memory stick in the memory stick slot.





Verify there is not a SIM card in the SIM card holder.

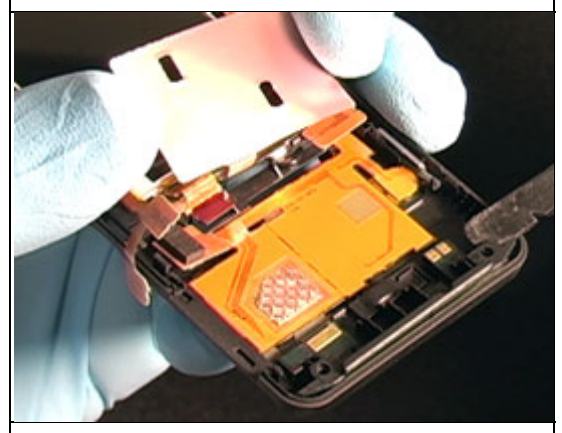


Fold the copper portion of the heat spreader over onto the LCD.



Perform sections 2.1.1-2.1.5 of the disassembly procedure.

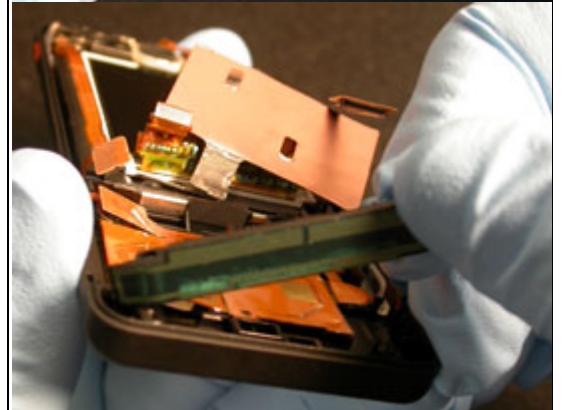
Slide the flat portion of a pry tool between the antenna and the back cover near the screw hole indicated.



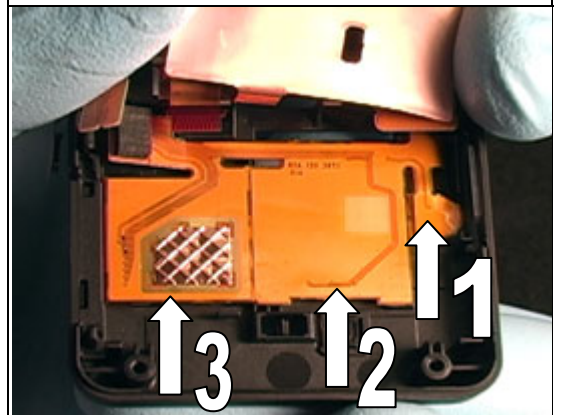
Lift the end of the antenna the pry tool is under.



Remove the antenna from the back cover.



Using a pry tool, detach the SIM flex from the back cover by prying in the three locations indicated in the order specified.

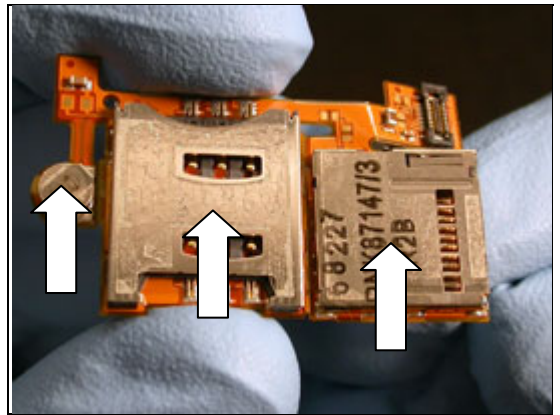


Lift the SIM flex film from the phone and clean off any remaining adhesive residue from the back cover with alcohol and a lint free cloth.

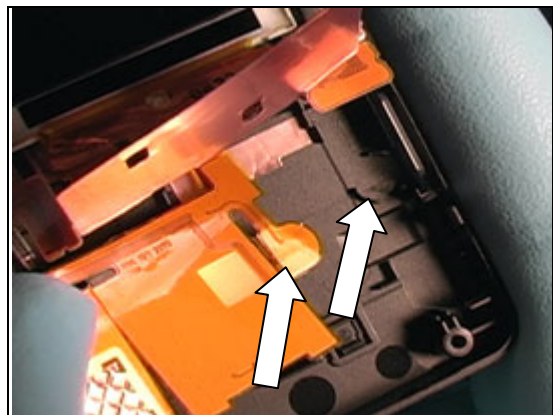




Obtain a new SIM flex film and remove the protective backing from the three areas of the SIM Flex indicated.

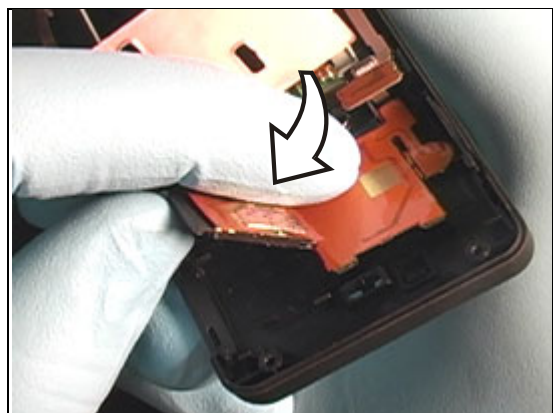


Position the backup battery portion of the SIM flex within its alignment features on the back cover.



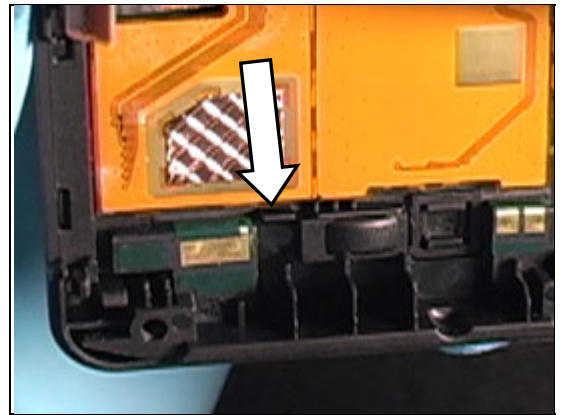
Lay the rest of the SIM flex film down in the back cover so that the SIM connector and memory stick socket are positioned within their alignment features.

DO NOT PRESS ON THE BACK OF THE SIM FLEX, DAMAGE TO THE SIM FLEX MAY OCCUR.



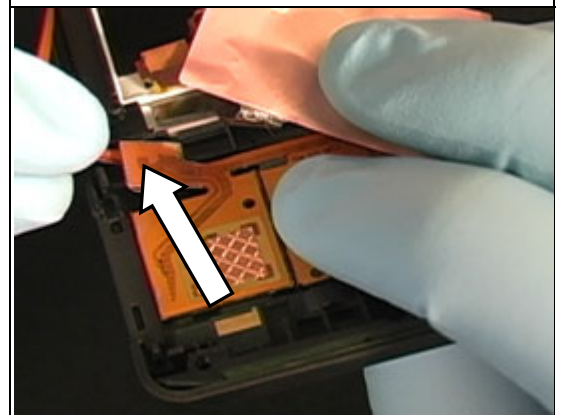
Insert the antenna into its cavity in the back cover.

MAKE SURE THAT ANTENNA IS SEATED UNDER LATCH INDICATED.



Connect the camera flex assembly to the SIM flex film.

Starting at section 4.1.2, perform the remainder of the reassembly procedure.



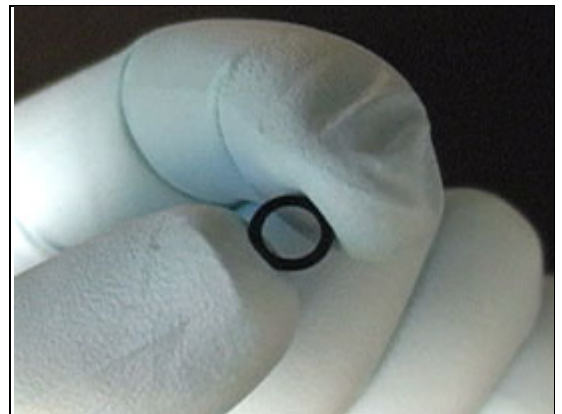
3.11 Rear Camera Window

Perform sections 2.1.1-2.1.6 of the disassembly procedure.

Press on the backside of the camera window with the pointed end of a nylon pointer as shown. The window will push free from the back cover.



Obtain a new camera window and remove its protective backing.

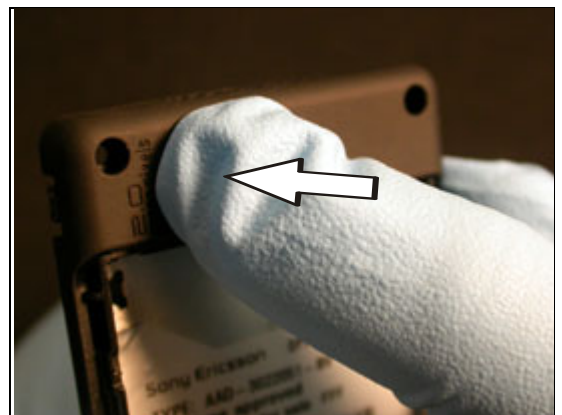


Insert the new camera window into its cavity in the back cover.



Press on the window for 10 seconds to make sure it bonds to the back cover.

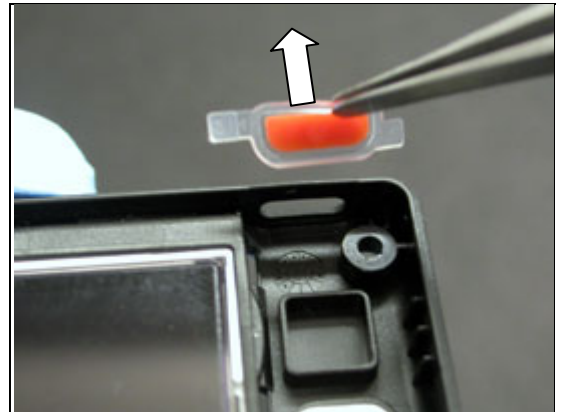
Starting at section 4.1.1, perform the remainder of the reassembly procedure.



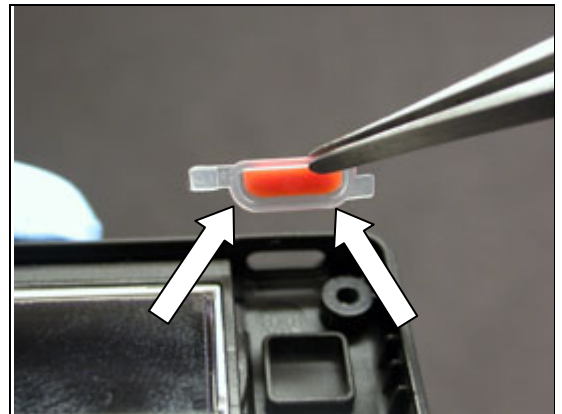
3.12 Walkman Key

Perform sections 2.1.1-2.1.6 of the disassembly procedure.

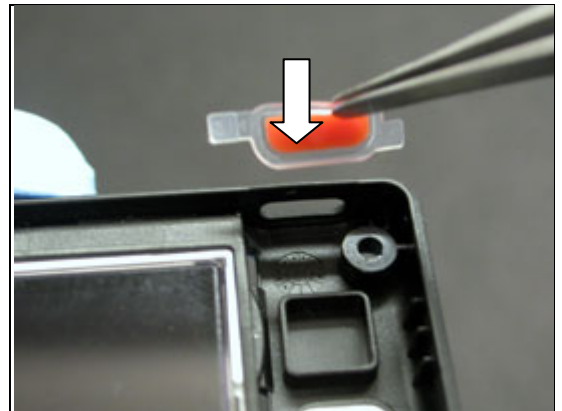
Using style 2A tweezers pull the Walkman key from its opening in the back cover as shown.



Obtain a new Walkman key and orient it so that the two curved corners indicated are towards the back cover.

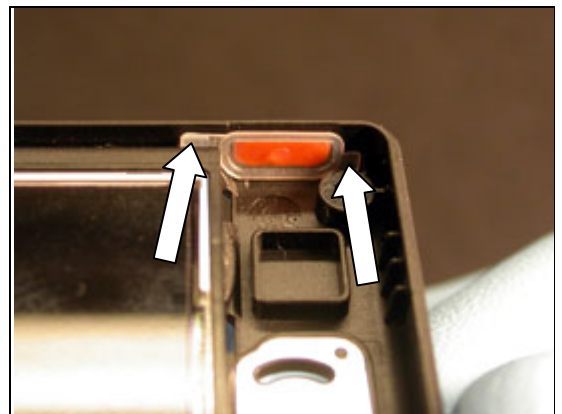


Insert the Walkman key into its opening in the back cover.



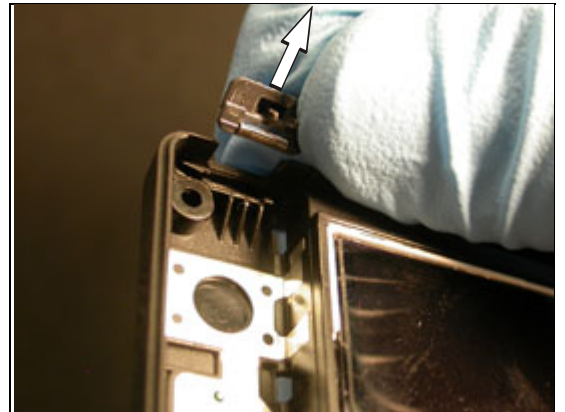
Verify the Walkman key's two alignment tabs are positioned in the back cover as shown.

Starting at section 4.1.1, perform the remainder of the reassembly procedure.

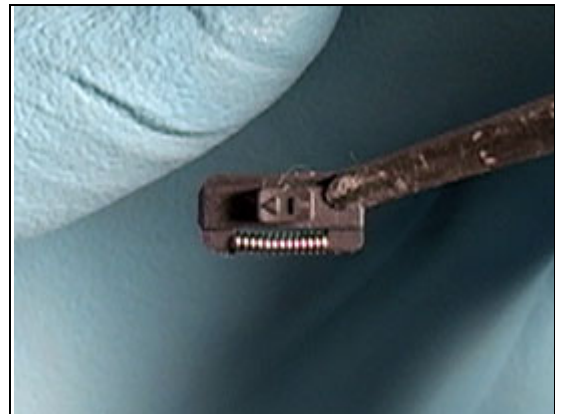


3.13 Volume Key

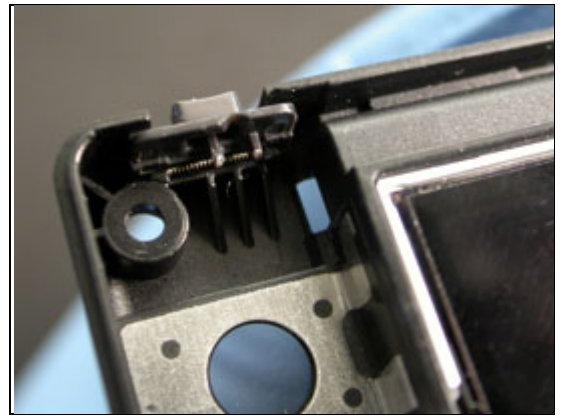
Perform sections 2.1.1-2.1.6 of the disassembly procedure.
Remove the volume key from the back cover.



Obtain a new volume key and make sure its spring is correctly attached.



Insert the new volume key into its slot in the back cover with the spring towards the back cover as shown.

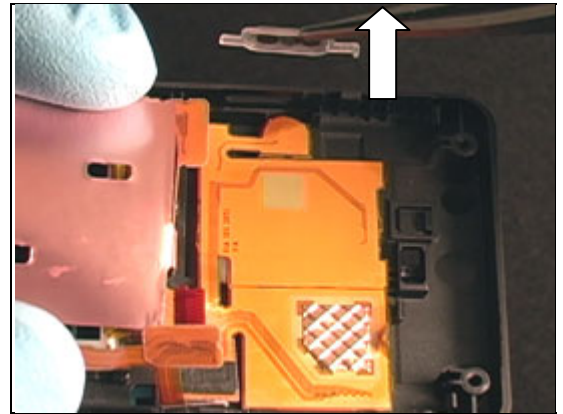


Starting at section 4.1.1, perform the remainder of the reassembly procedure.

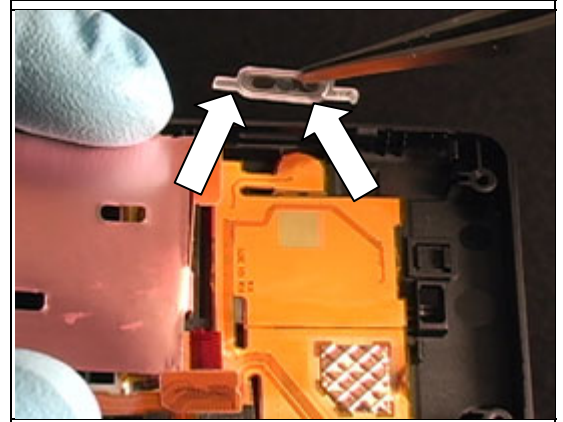
3.14 Camera Key

Perform sections 2.1.1-2.1.5 of the disassembly procedure.

Using style 2A tweezers pull the Camera key from its opening in the back cover as shown.



Obtain a new camera key and orient it so that the two curved corners indicated are towards the back cover.

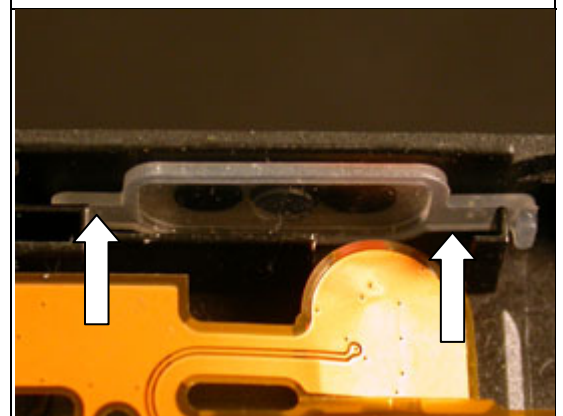


Work the camera key into its opening in the back cover.



Verify the camera key's two alignment tabs are positioned in the back cover as shown.

Starting at section 4.1.2, perform the remainder of the reassembly procedure.



3.15 Memory Stick Cover

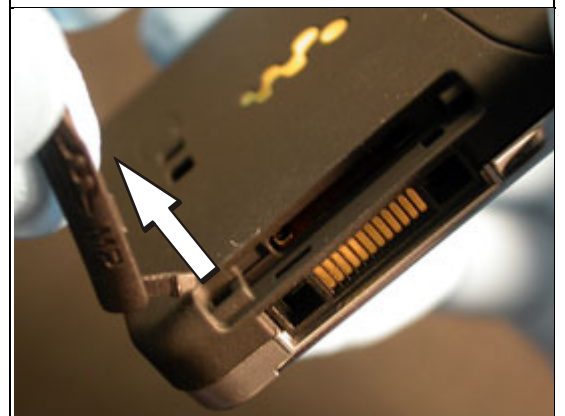
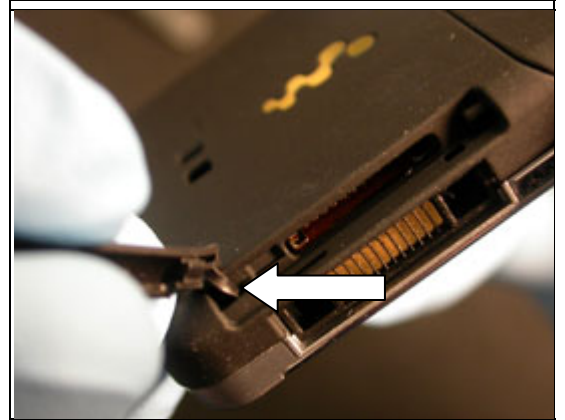
No disassembly required.

Unlatch the memory stick cover from its slot in the back cover

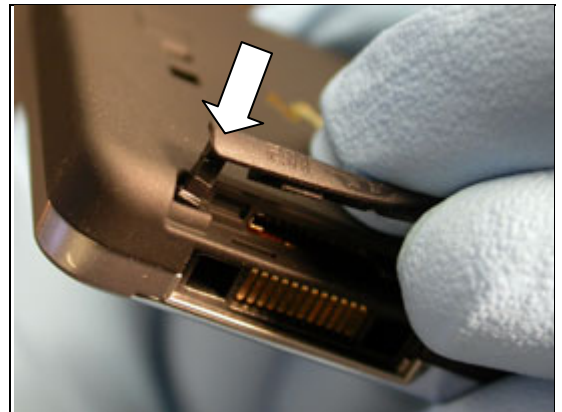
Locate the hole where the tab portion of the memory stick cover inserts through back cover.

Pull the memory stick cover straight away from hole until the tab holding the cover to the phone comes free.

Obtain a new memory stick cover.



Press the new memory stick cover's tab into its hole in the back cover. Use a nylon pointer if needed.



Snap the cover into its opening in the phone.

No reassembly required.



3.16 Co-Brand Label

No disassembly required.

Insert one side of a pair of style 2A tweezers under the co-brand label where shown and peel the co-brand plate off of the front cover.

Be careful to not damage the front cover.

Clean off any remaining adhesive residue with alcohol and a lint free cloth.

Obtain a new co-brand label and remove it from its protective backing.

Using style 2A tweezers, install the new co-brand label in co-branding cavity on the front cover.

Make sure the co-brand label is positioned within its cavity.



Apply pressure over the entire surface of the co-brand label to make sure it is well adhered.

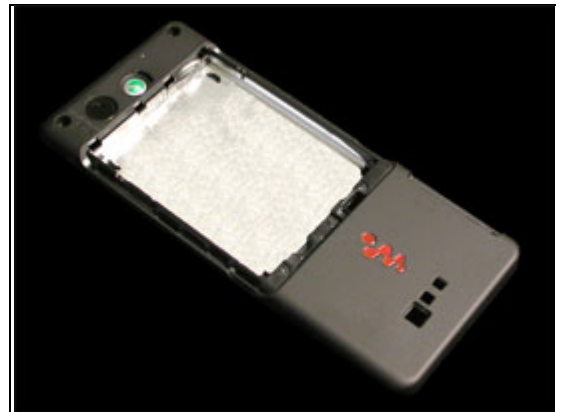
No reassembly required.



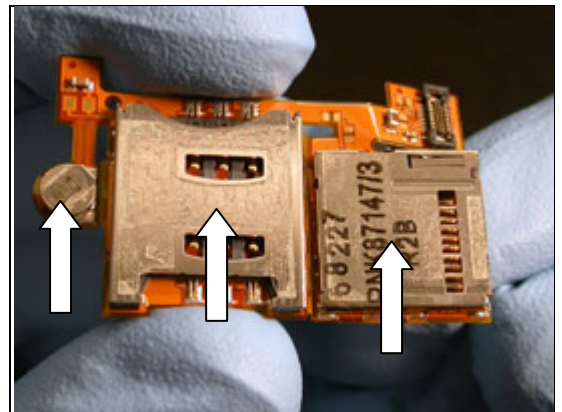
3.17 Back Cover

Perform sections 2.1.1-2.1.6 of the disassembly procedure.

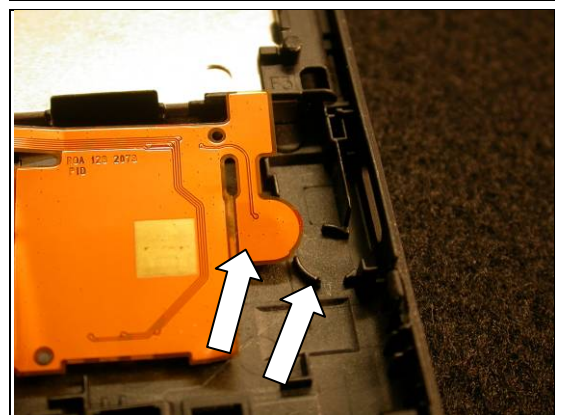
Obtain a new back cover.



Obtain a new SIM flex film and remove the protective backing from the three areas of the SIM Flex indicated.

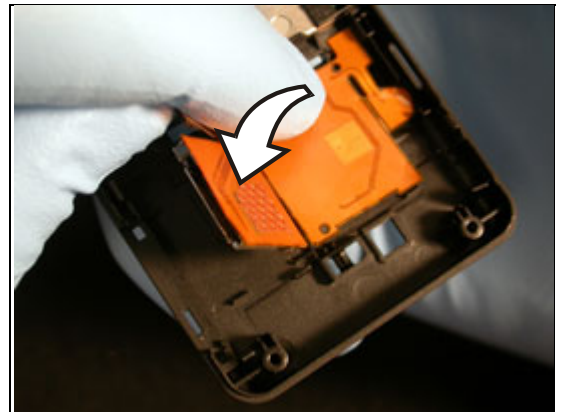


Position the backup battery portion of the SIM flex within its alignment features on the back cover.

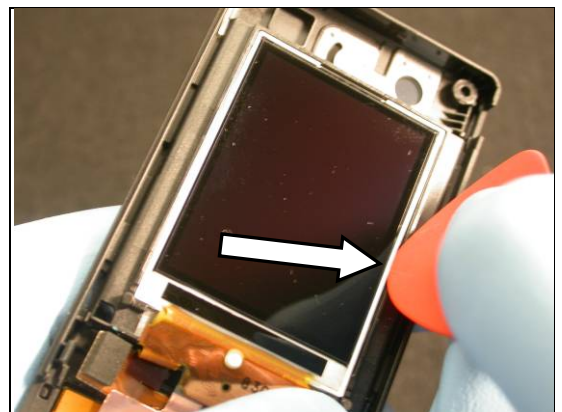


Lay the rest of the SIM flex film down in the back cover so that the SIM connector and memory stick socket are positioned within their alignment features.

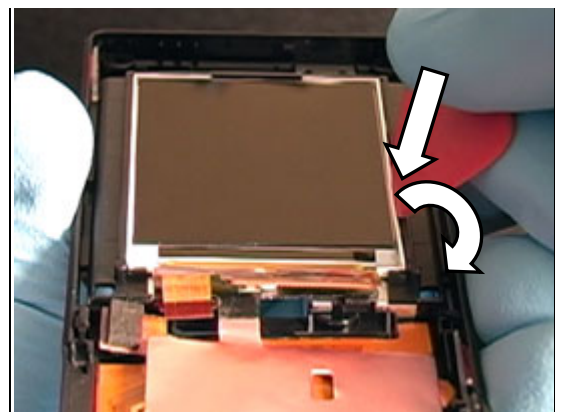
DO NOT PRESS ON THE BACK OF THE SIM FLEX, DAMAGE TO THE SIM FLEX MAY OCCUR.



Insert the corner of a plectrum in the seam along one side of the LCD in the location shown.

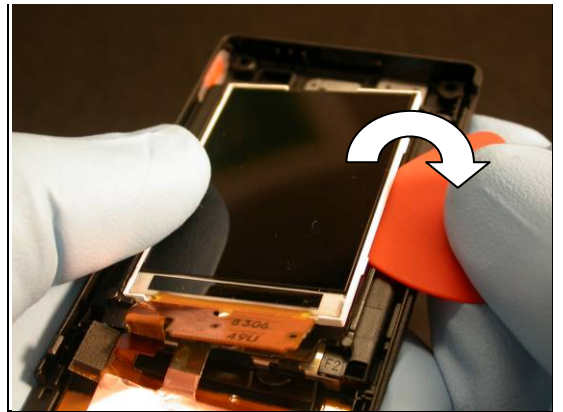


Press the plectrum into the seam while rotating it away from the LCD.

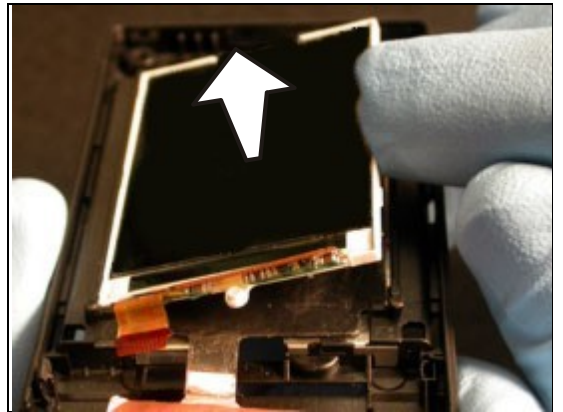




The LCD should pop free of its cavity in the back cover.



Lift the LCD out of the old back cover.



Remove the heat spreader from the old back cover.

IF THE HEAT SPREADER IS DAMAGED FROM THE REMOVAL OF THE LCD, REPLACE THE HEAT SPREADER WITH A NEW ONE.

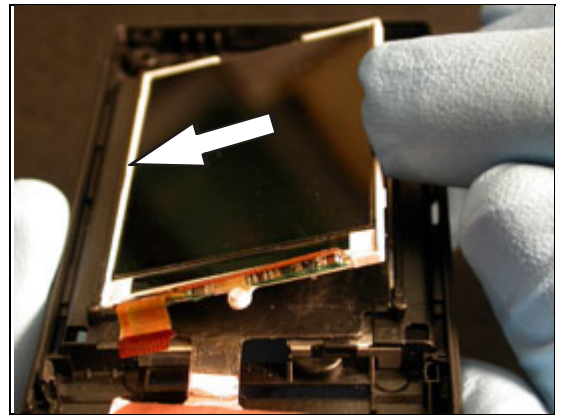


Place the heat spreader into the new back cover so that holes in the foil are oriented as shown.

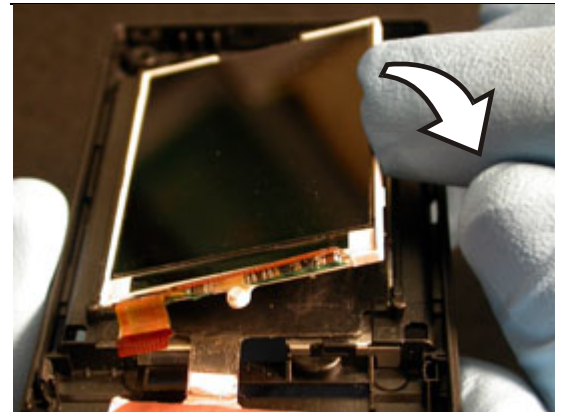




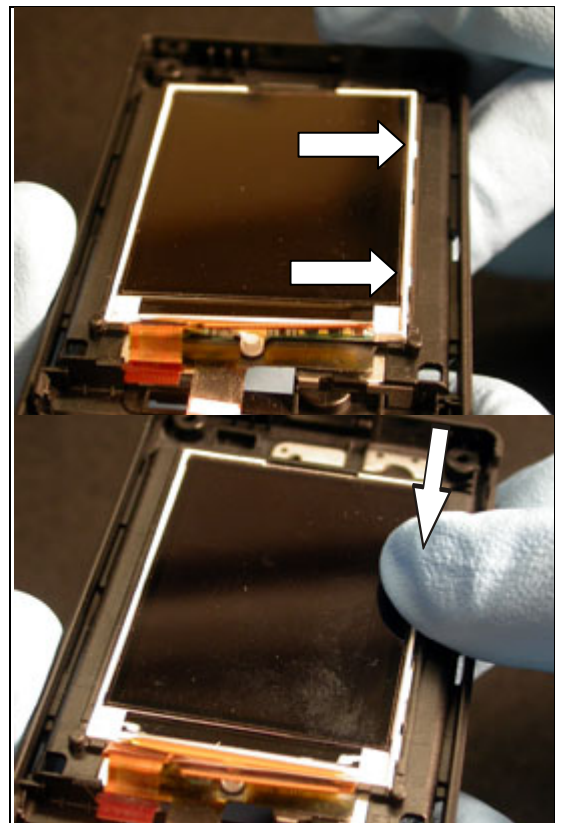
Insert one side of the LCD into its cavity in the new back cover as shown.



Rotate the LCD down into its cavity.

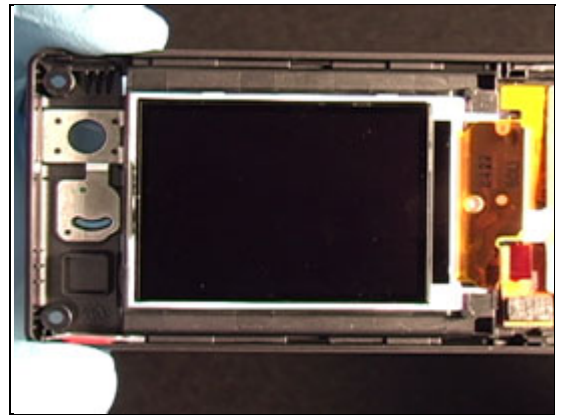


Press the raised edge of the LCD indicated into its cavity in the back cover so that the two latches on that side of the LCD snap into their openings.





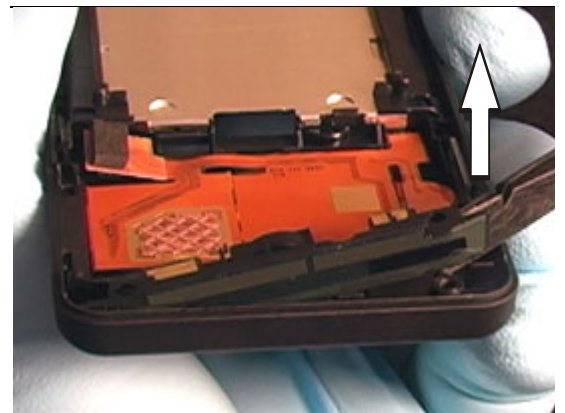
Make sure the LCD is fully seated and that there are no gaps along either side.



On the old back cover, slide the flat portion of a pry tool between the antenna and the back cover near the screw hole indicated.



Lift the end of the antenna the pry tool is under.

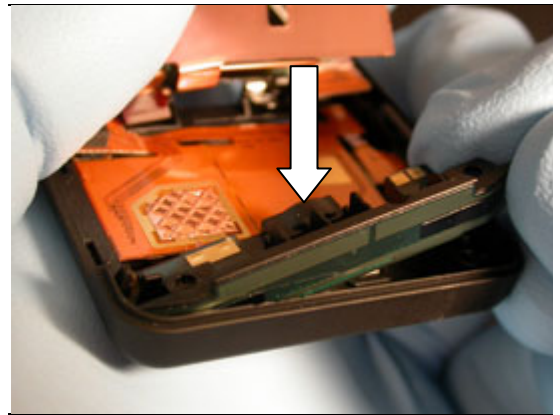


Remove the antenna from the old back cover.

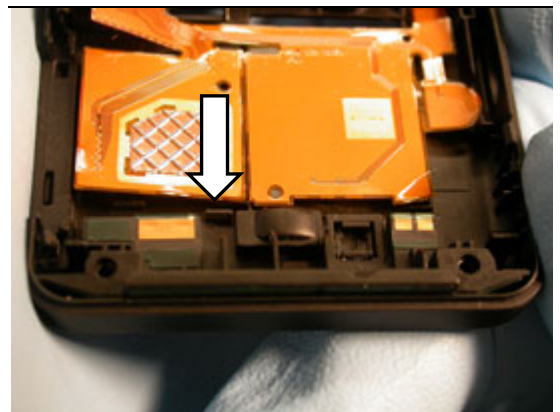




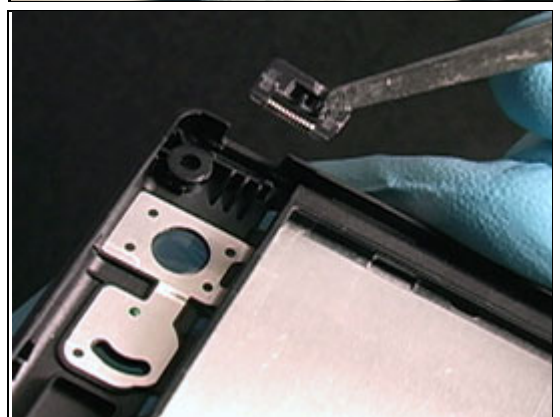
Insert the antenna into its cavity in the new back cover.



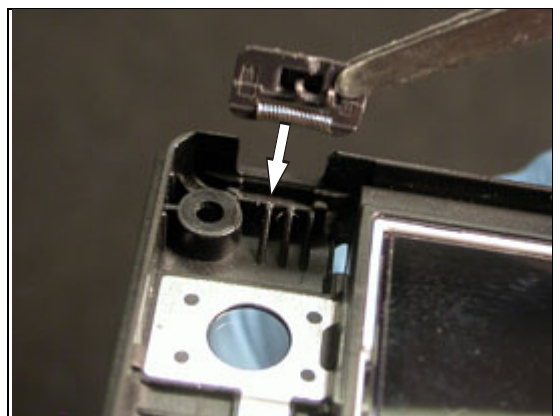
MAKE SURE THAT ANTENNA IS SEATED UNDER LATCH INDICATED.



Remove the volume key from the old back cover.

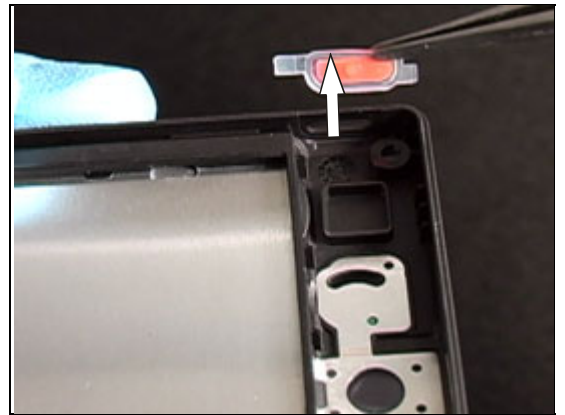


Insert the volume key into its slot in the new back cover with the spring oriented towards the back cover as shown.

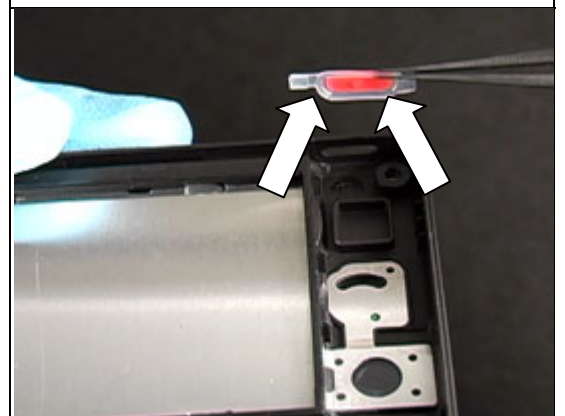




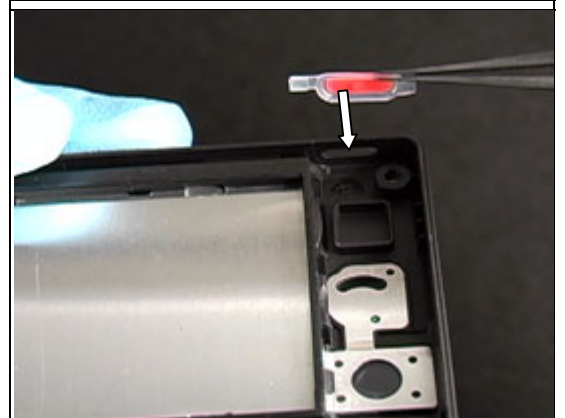
Using style 2A tweezers pull the Walkman key from its opening in the old back cover.



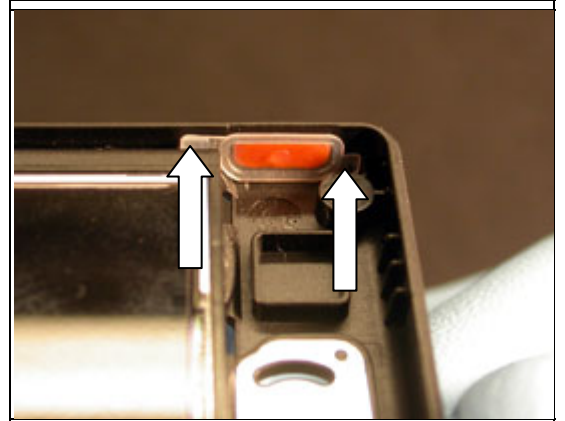
Orient the Walkman key so that the two curved corners indicated are toward the new back cover.



Insert the Walkman key into its opening in the new back cover.

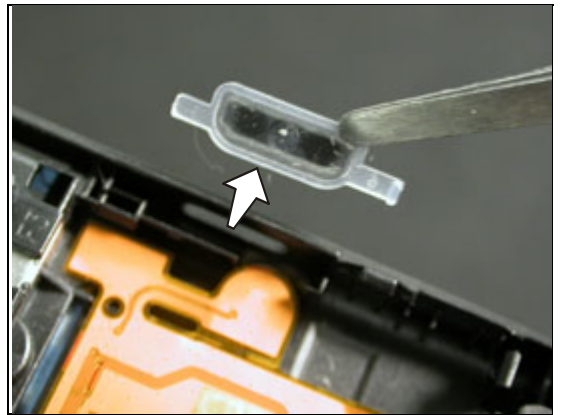


Verify the Walkman key's two alignment tabs are positioned in the back cover as shown.

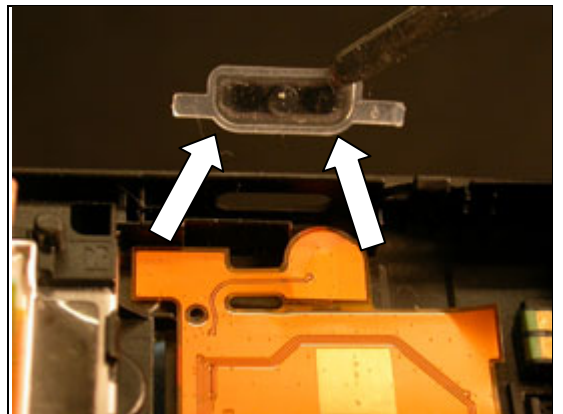




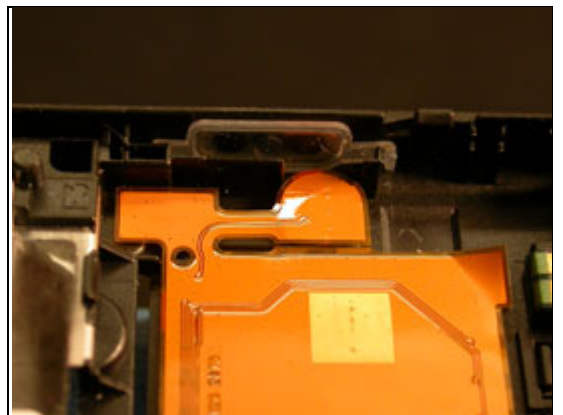
Using style 2A tweezers pull the camera key from its opening in the old back cover.



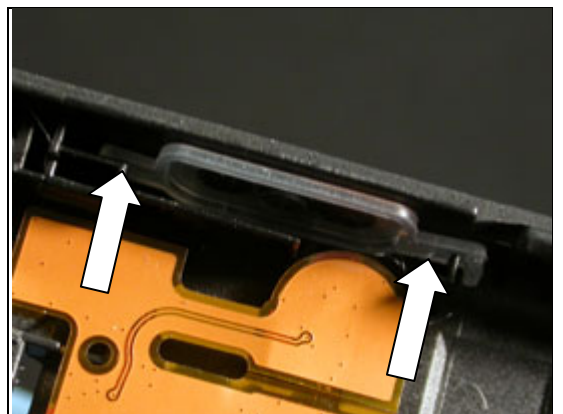
Orient the camera key so that the two curved corners indicated are towards the new back cover.



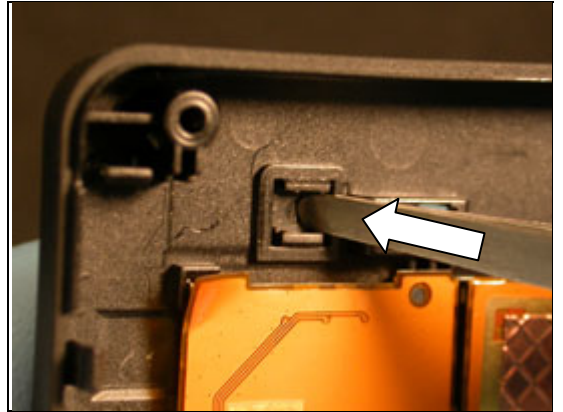
Work the camera key into its opening in the new back cover.



Verify the camera key's two alignment tabs are positioned in the back cover as shown.



To remove the RF port plug from the old back cover, press on the inside surface of the plug until the plug pops out of its opening.



Insert the RF port plug in the opening in the new back cover and press it into place.

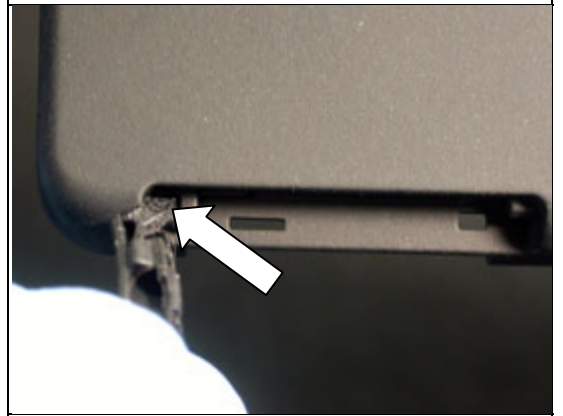
THE RF PORT PLUG SHOULD BE FLUSH WITH THE SURROUNDING BACK COVER WHEN CORRECTLY INSTALLED



Unlatch the memory stick cover from its slot in the old back cover



Locate the hole where the tab portion of the memory stick cover inserts through back cover.

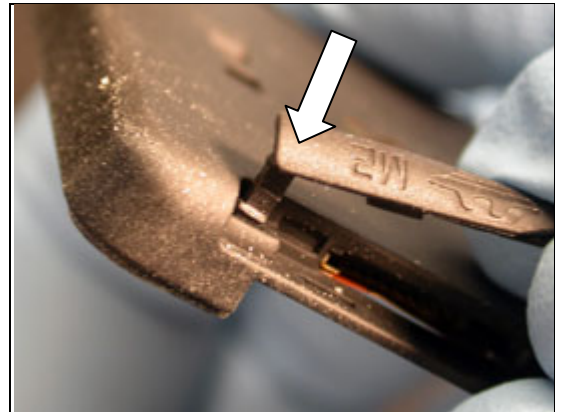




Pull the memory stick cover straight away from hole until the tab holding the cover to the phone comes free.



Press the memory stick cover's tab into its hole in the new back cover. Use a nylon pointer if needed.



Snap the cover into its opening in the new back cover.

Starting at section 4.1.1, perform the remainder of the reassembly procedure.

Perform the label installation procedure using the information from label on the old back cover to generate a new label.



3.18 RF Port Plug

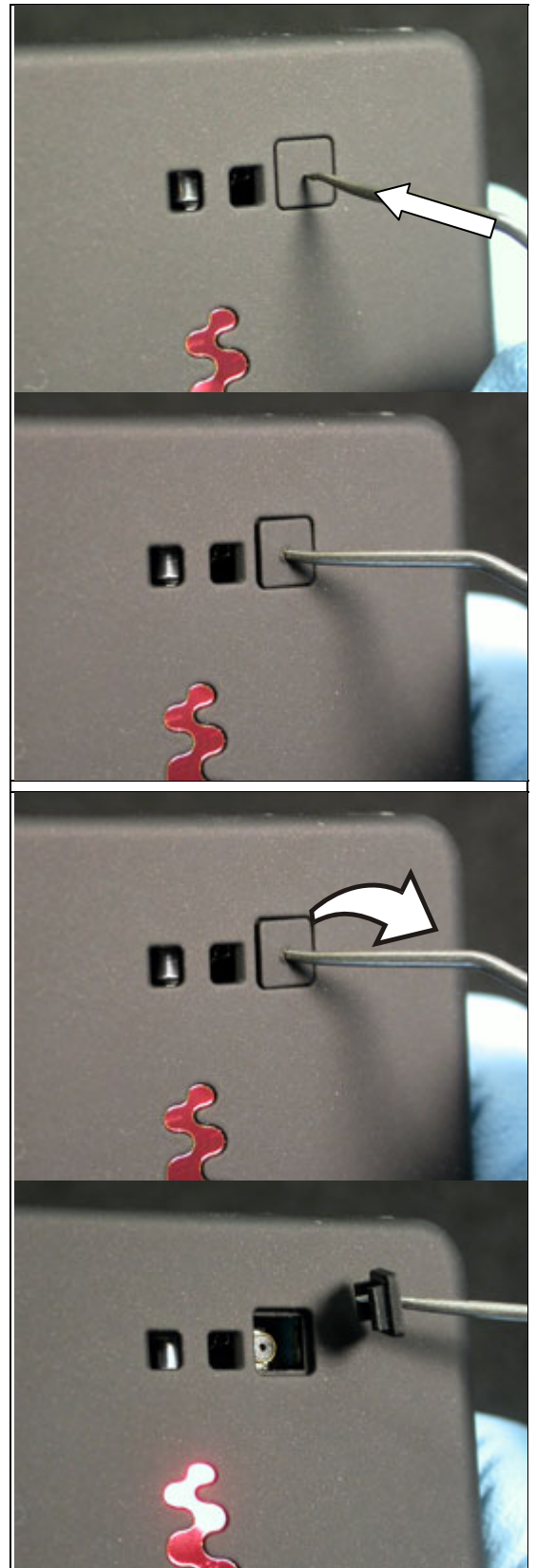
No disassembly required.

Press the tip of the dental hook 2.5MM – 3MM into the RF port plug.

BE CAREFUL NOT TO PRESS THE TIP OF THE DENTAL HOOK TOO FAR THROUGH THE PLUG TO AVOID DAMAGING THE CIRCUIT BOARD.

IT MAY PROVE HELPFUL TO MARK 2.5 TO 3MM FROM THE TIP OF THE DENTAL HOOK USING A MARKER OR TAPE.

Rotate the dental hook to get the RF port plug to lift out of its opening in the back cover.



Obtain a new RF port plug and insert it into its opening in the back cover as shown.

THE RF PORT PLUG SHOULD BE FLUSH WITH THE SURROUNDING BACK COVER WHEN CORRECTLY INSTALLED.

No reassembly required.

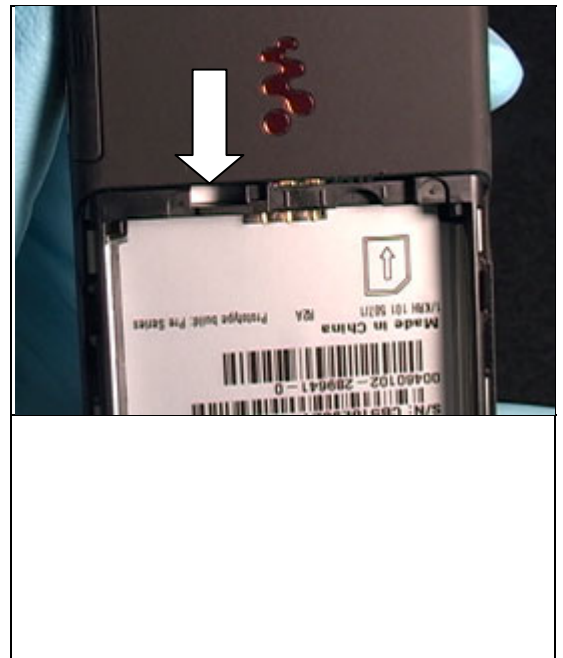


3.19 Liquid Intrusion Indicator

Perform section 2.1.1 of the disassembly procedure.

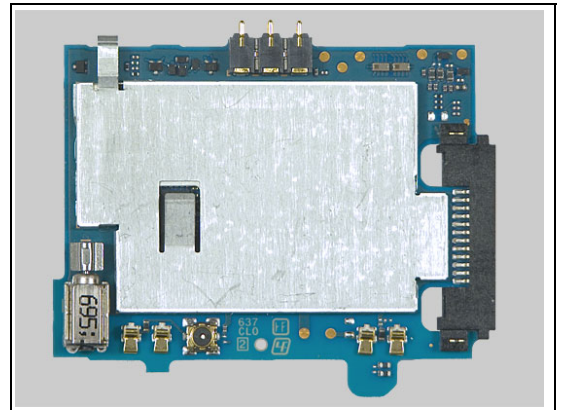
If the liquid intrusion indicator is activated, contact your local Sony Ericsson representative for instructions on how to handle liquid damaged units.

Perform section 4.1.6 of the reassembly procedure.



3.20 Board Swap – Replace Swap Board

Follow the 2.1.1 to 2.1.5 Disassembly instructions!



Follow the 4.1.2 to 4.1.6 Reassembly instructions!



3.21 Board Swap – Change Label

CHANGE LABEL

Follow the instructions in the Generic Repair Manual – Build swap for change of label.

3.22 Board Swap – Customize Software

CUSTOMIZATION OF SOFTWARE

Follow the instructions in the Generic Repair Manual – Build swap for customization of the software



Sony Ericsson

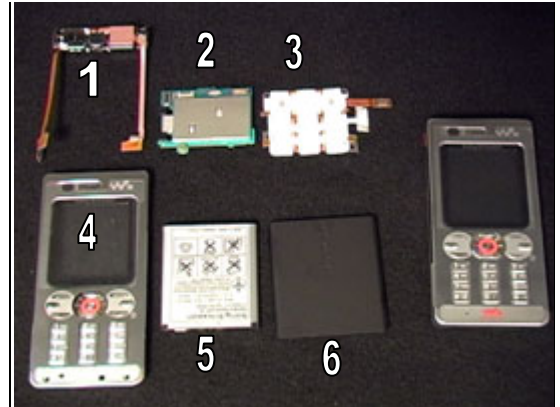
Working Instruction Repair Instruction Mechanical/3/000 21-1/FEA 209 544/123, Mechanical

4 Reassembly

4.1 Overview

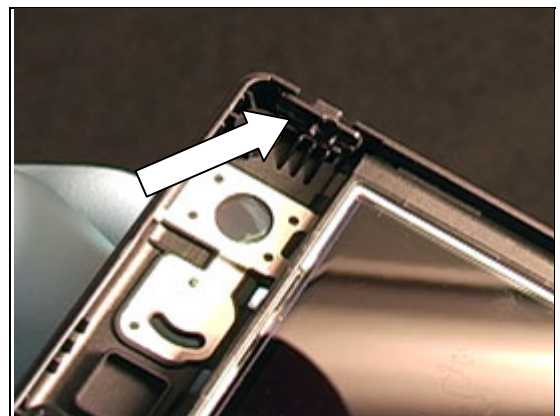
The reassembly is done in the following sequence:

1. Install Camera Flex Assembly
2. Install Circuit Board
3. Install Dome Foil Assembly
4. Install Front Cover
5. Install Battery
6. Install Battery Cover



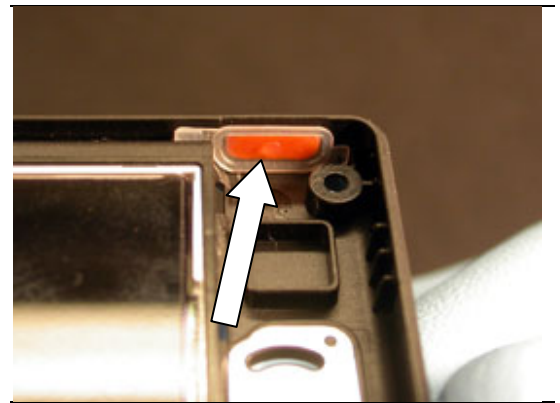
4.1.1 Camera Flex Assembly Installation

Verify that the camera key is in its slot in the back cover with the spring facing downward.



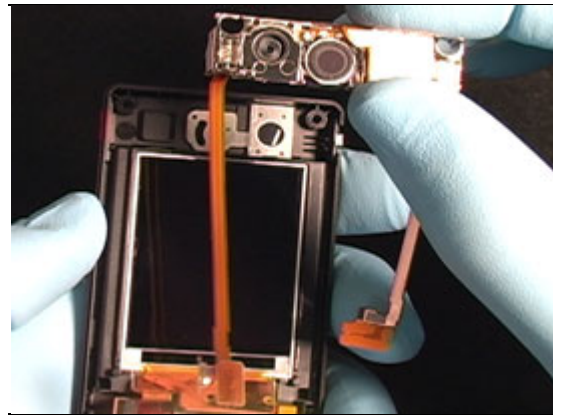
Verify that the Walkman key is in its slot in the back cover with the curved corners towards the frame as shown.

Also verify the Walkman key's two alignment tabs are positioned in the back cover as shown.

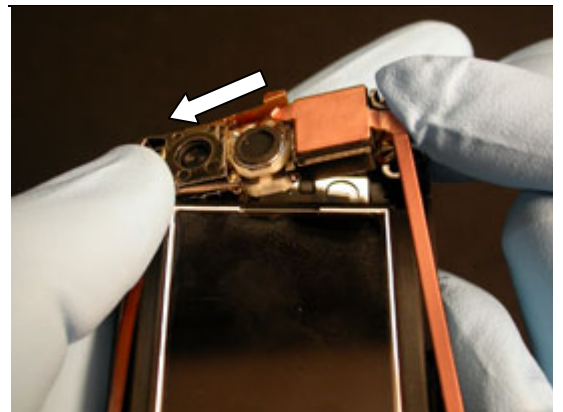




Obtain the camera flex assembly and orient it relative to the back cover as shown.



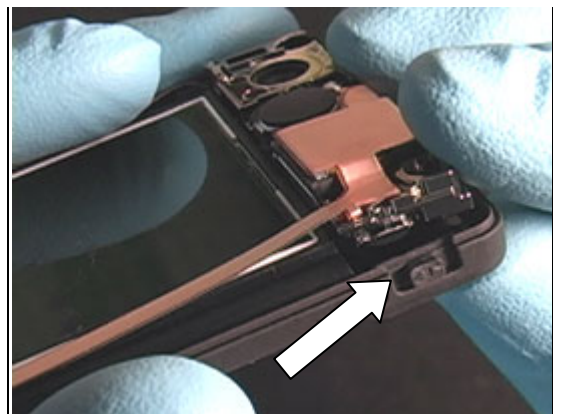
Insert the Walkman key end of the camera flex assembly first.



Then rotate the remainder of the camera flex assembly into its cavity in the back cover.

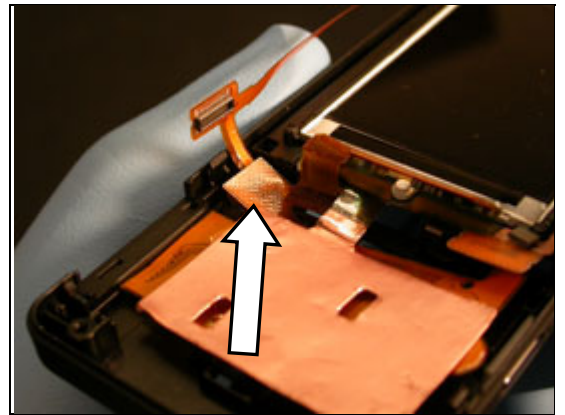


Make sure the new camera flex assembly is fully seated in back cover and that the volume key works properly.



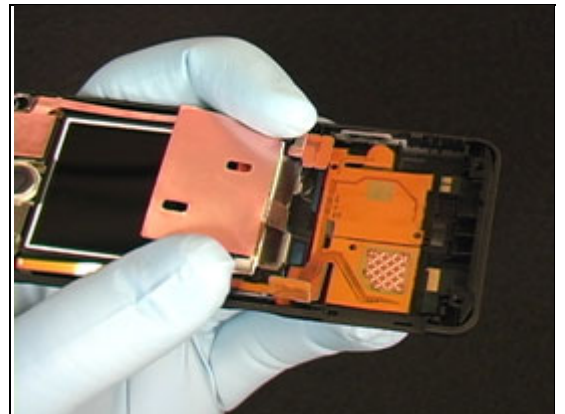


Connect the camera flex assembly to the SIM flex film.

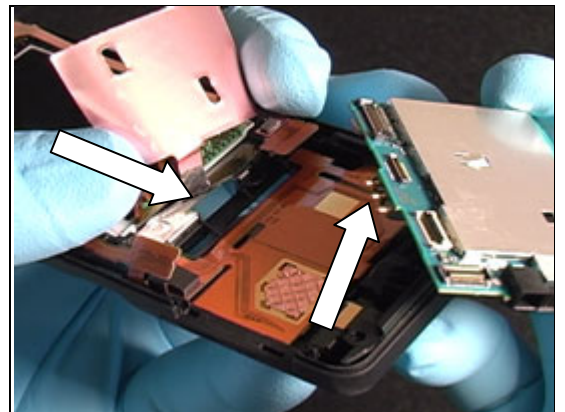


4.1.2 Circuit Board Installation

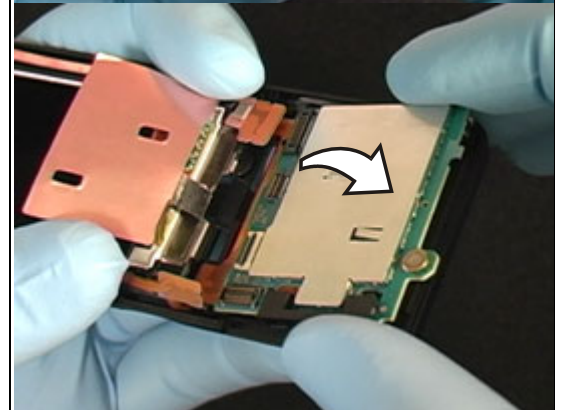
Lift the copper portion of the heat spreader up and hold it out of the way as shown.



Insert the circuit board into the back cover as shown so that the battery connector inserts into its opening in the back cover first.

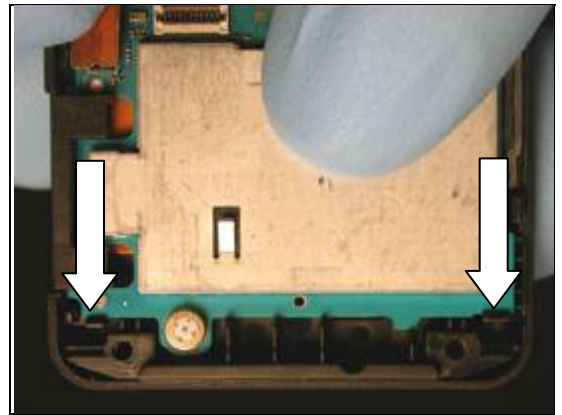


Rotate the circuit board down on the back cover.

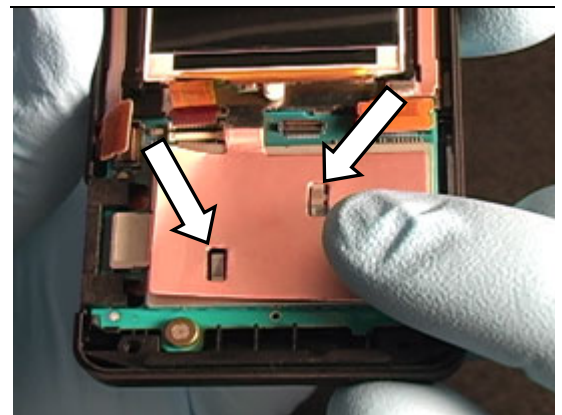




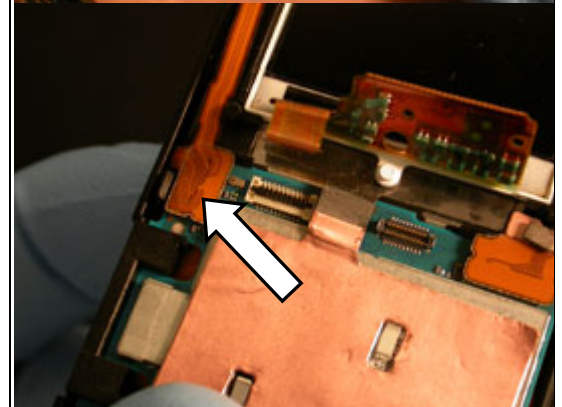
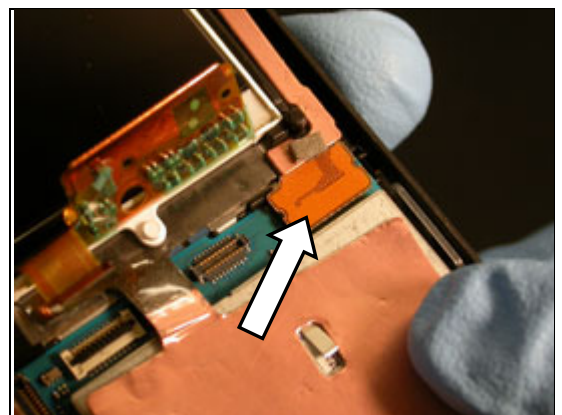
Push down on the two corners of the circuit board indicated so that the board snaps securely under its two latches shown.



Fold the copper portion of the heat spreader down onto the circuit board's shield can. Make sure the shield can's two prongs go through the heat spreader.

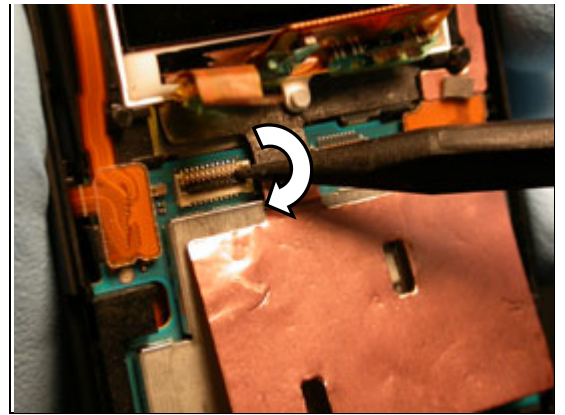


Connect the two camera flex assembly connections to the circuit board.

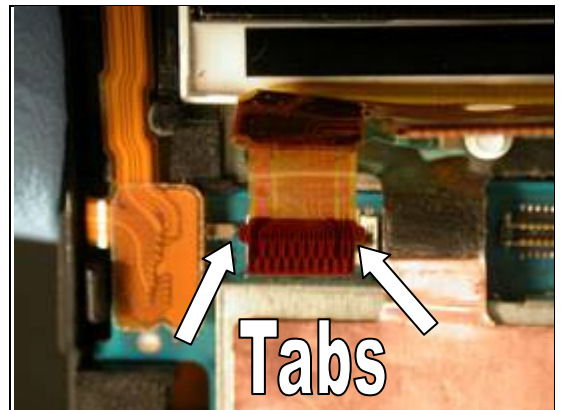




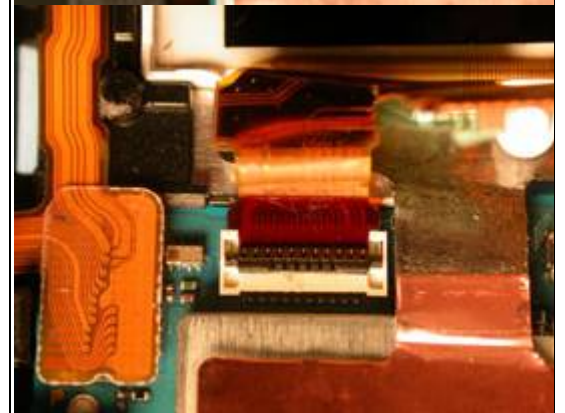
Using a nylon pointer, verify the black retaining bar on the LCD to board ZIF connector is rotated up as shown.



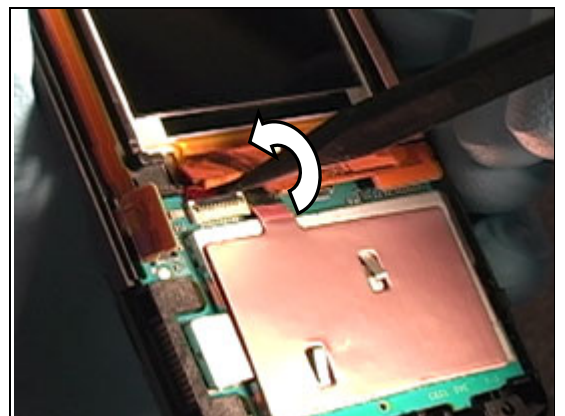
The LCD's flex connection is completely seated in the ZIF connector when the two tabs on the flex are against the ZIF connector.



Insert the LCD flex film into its corresponding ZIF connector on the circuit board.

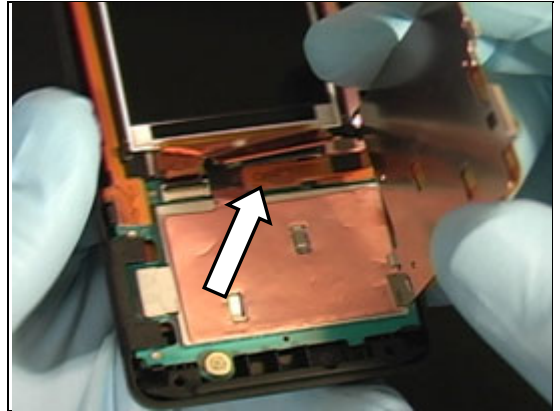


Using a nylon pointer, rotate the black retaining bar on the ZIF connector down over the LCD flex as shown.



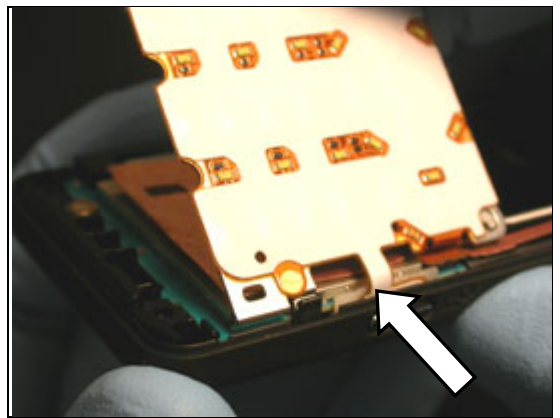
4.1.3 Dome foil Assembly Installation

Connect the dome foil assembly's flex film connector to the circuit board.

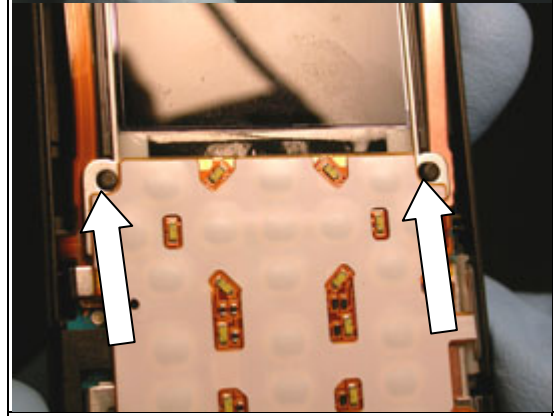
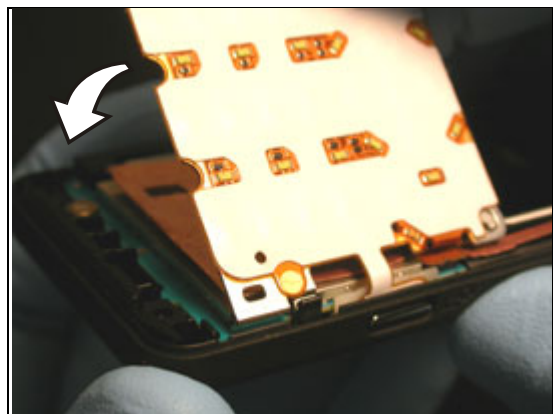


Insert the camera switch portion of the dome foil assembly into place between the circuit board and camera key.

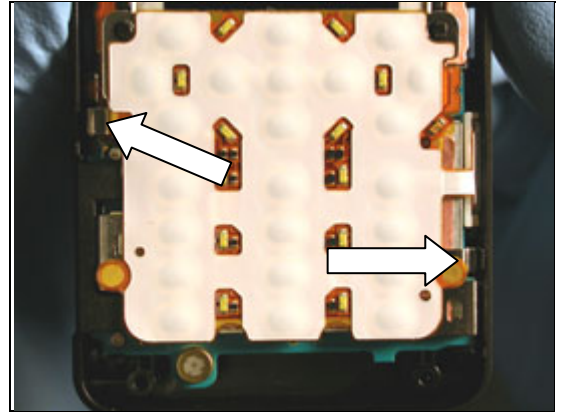
Make sure the camera key remains in its proper location.



Rotate the dome foil assembly down over the circuit board so that that two alignment pins pass through the two holes at the top of the dome foil assembly as shown.

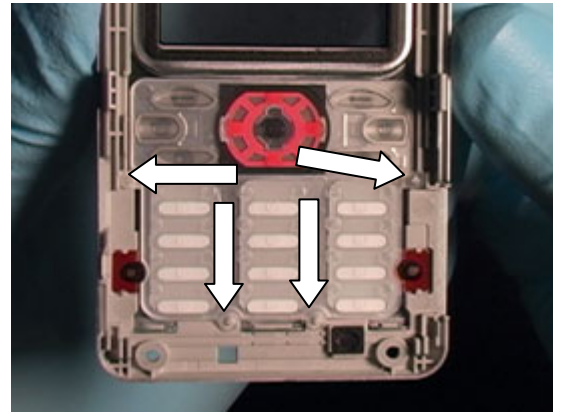


Lock the dome foil assembly into place by snapping the assembly under the two latches indicated.

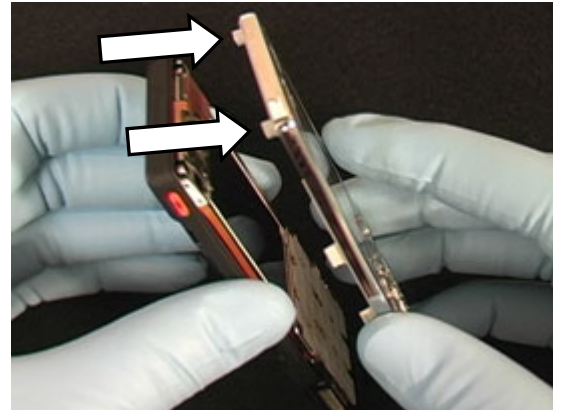


4.1.4 Front Cover Installation

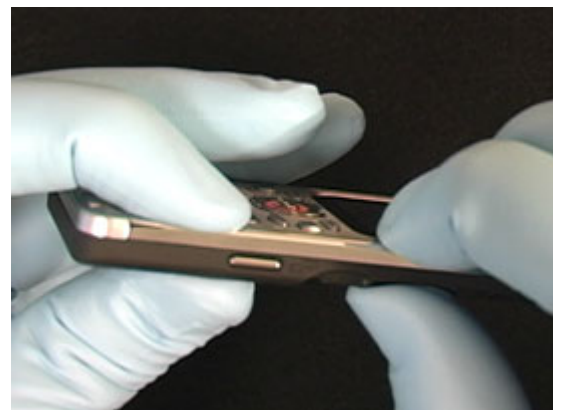
Make sure the keypad is properly positioned in the front cover and that the keypad is pressed down around each of its four placement pins.



Place the front cover over the rest of the phone.
Verify that the two screw bosses indicated insert into their corresponding holes in the camera flex assembly.



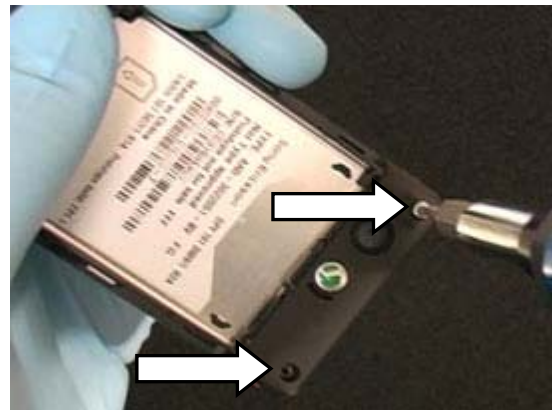
Squeeze the two covers together and inspect the outside seam of the phone. There should be no gaps around the seam.



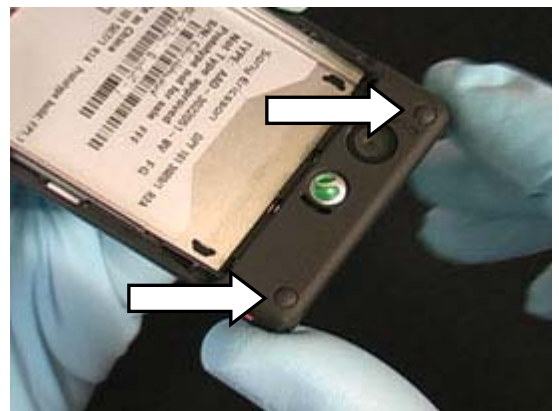
Install two screws in the front cover and tighten with a torque driver set to 20 N*cm and a T6 bit.



Install two screws in the back cover and tighten with a torque driver set to 20 N*cm and a T6 bit.



Install two rear screw plugs by inserting them into the rear screw cavities. Press on the rear screw plugs to make sure they seat fully.



Obtain a new co-brand label and remove it from its protective backing.

Using style 2A tweezers, install the new co-brand label in co-branding cavity on the front cover.

Make sure the co-brand label is positioned within its cavity.



Apply pressure over the entire surface of the co-brand label to make sure it is well adhered.



4.1.5 Battery Installation

Insert the contact end of the battery into the battery cavity first as shown.

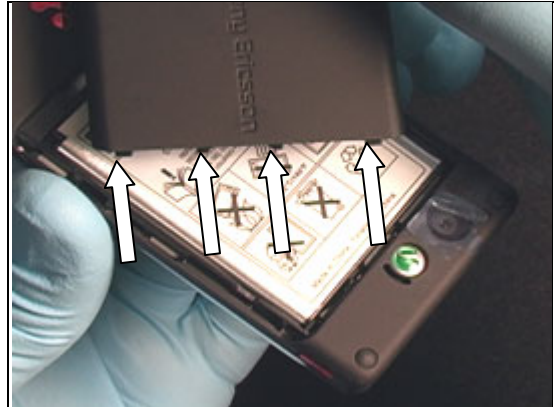


Rotate the battery down into its cavity. Make sure it is fully seated.



4.1.6 Battery Cover Installation

Position the battery cover as shown and insert the four tabs on the battery cover into the four corresponding openings in the edge of the battery cavity.



Rotate the battery cover down and snap it into place.

Inspect the seam around the battery cover to make sure there are no gaps.





5 Revision History

| Rev. | Date | Changes / Comments |
|------|-------------------|--|
| A | February 19, 2007 | Initial Release |
| B | 2007-04-12 | W888 added |
| C | 2008-01-23 | New chapter added, called: Sheet(Battery) Installation |
| 4 | 2009-07-07 | Added Chapter 3.20-22 Board Swap |